



City of Doral

RFP No. 2021-09

Construction of Pedestrian Bridge – Design Build

Addendum No. 5

Financial Projects Number(s): 441642-1-58-01
Contract Number: RFP No. 2021-09

Below are changes/ updates regarding this project. This Addendum is and does become a part of the above-mentioned solicitation. This addendum is issued to modify the subject solicitation as follows:

New trail lighting should end at NW 58th Street (guiding users to Doral Meadow Park).

Correcting typographical error on page 71 of File 1 of 2.

The Design-Build Firm shall be responsible for design and construction of a lighting system for the shared use path (Turnpike Trail) abutting the Pedestrian Bridge facility. The limits of the lighting work on the Turnpike Trail extend along north side of NW 25th Street from NW 12th Avenue westward to NW 117th Avenue then north along the east side of NW 117 Avenue connecting to the south ramp of the proposed Pedestrian Bridge. Connecting to the north side ramp of the Pedestrian Bridge, the Turnpike Trail limits continue north along the eastside of NW 117th Avenue **ending NW 48th 58th Street**. Turnpike Trail Lighting requirements are provided in A-17 City of Doral Lighting Master Plan attached to this RFP. A summary of the lighting system elements included in the Master Plan that provide the best performance and unique aesthetic looks for the City of Doral follows:

Shared Use Path/Trails

- **Fixture** – Luthonia Radian Post Top
- **Pole** – Direct buried 12 ft Hapco pole with 2ft post top fixture. Total Mounting Height = 14ft
 - Two chamber pole option for mounting electronic equipment.
- **Color** – Doral Blue
- **Dimming/Motion Controls** - nLightAIR with the ClAIRity Mobile App
- **Monitoring** – nLight ECLYPSE and free SensorView software.

Parking Lot/Area Lighting

- **Fixture** – Luthonia Radian Arm Mount
- **FPL Utility Conflict Pole** – 3ft concrete base with 9ft Hapco pole and 2ft arm. Total = 14ft Mounting Height.
- **Non-Utility Conflict Pole** – 3ft concrete base with 20ft Hapco pole and 2ft arm. Total = 25ft Mounting Height.
 - Two chamber pole option for mounting electronic equipment.
- **Color** – Doral Blue

Other Pedestrian Walkways

- **Fixture** – Amerlux Lunnetta LED Walkway Bollard
- **Color** – Doral Blue



City of Doral

RFP No. 2021-09

Construction of Pedestrian Bridge – Design Build

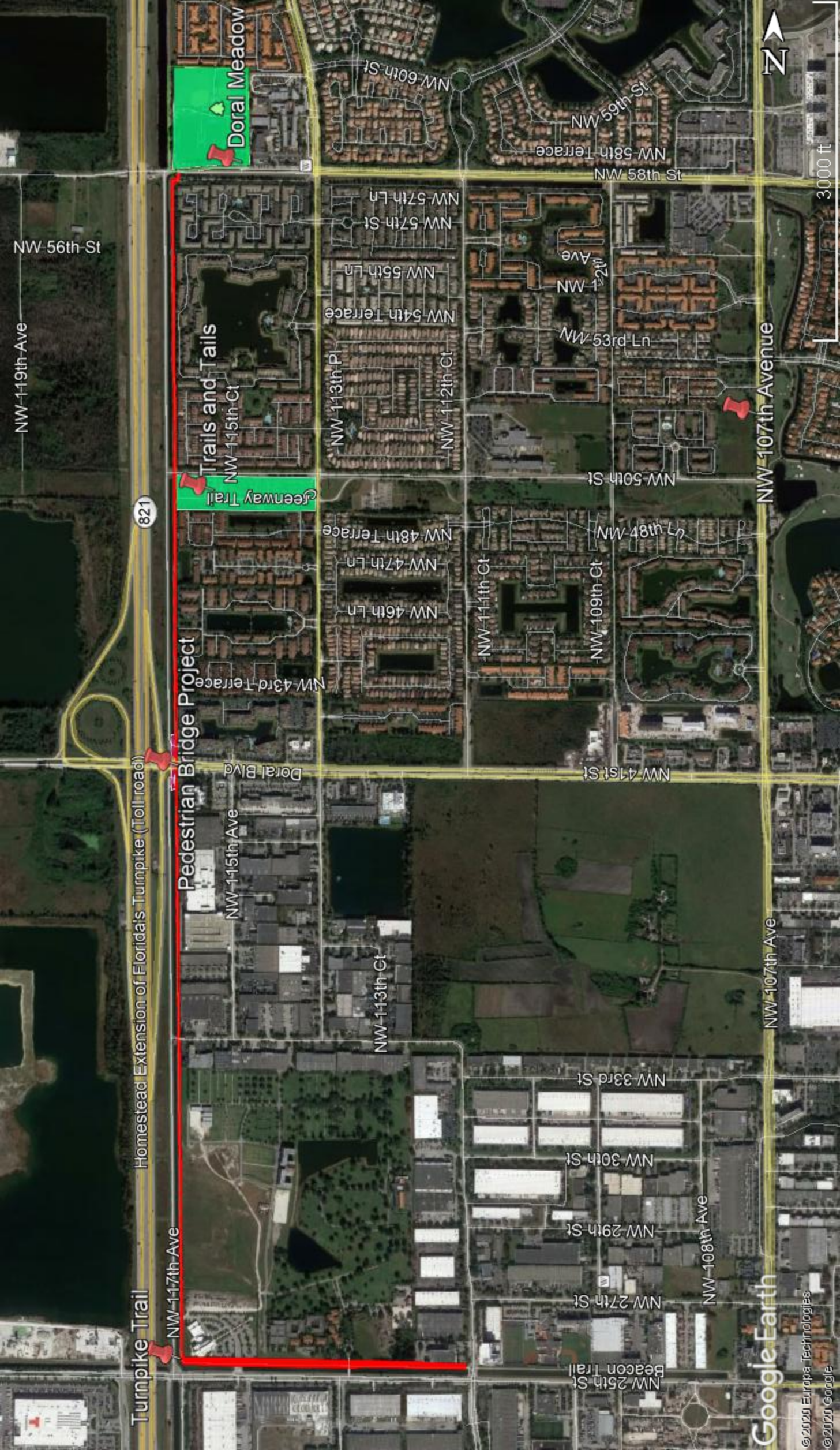
Addendum No. 5

The Design-Build Firm shall provide a lighting design and a lighting analysis for all lighting elements of this Project and prepare lighting plans in accordance with City of Doral provided lighting criteria.

For the Turnpike Trail lighting limits described in this RFP, the Design-Build Firm shall develop and submit for approval, Load Center/Circuit/Pole Number identification plan that is compatible with the existing lighting systems maintenance identification scheme.

For the proposed Turnpike Trail Lighting, the Design-Build Firm shall either:

1. Provide a new load center per current codes and all applicable criteria.
2. Identify an existing load center capable of feeding the existing and proposed lighting while meeting all current codes and all applicable criteria.



NW 119th Ave

NW 56th St

NW 117th Ave

NW 115th Ave

NW 113th Ct

NW 111th Ct

NW 109th Ct

NW 107th Ave

NW 108th Ave

NW 107th Avenue

NW 108th Ave

NW 107th Avenue

NW 108th Ave

NW 107th Avenue

NW 108th Ave

NW 107th Avenue

821

Pedestrian Bridge Project

Homestead Extension of Florida's Turnpike (Toll road)

Turnpike Trail

Trails and Tails
NW 115th Ct

NW 115th Ave

Doral Blvd

NW 43rd Terrace

NW 46th Ln

NW 47th Ln

NW 48th Terrace

NW 54th Terrace

NW 55th Ln

NW 57th St

NW 57th Ln

NW 60th St

Doral Meadow

NW 54th Terrace

NW 55th Ln

NW 57th St

NW 54th Terrace

NW 46th Ln

NW 47th Ln

NW 48th Terrace

NW 113th Ct

NW 60th St

NW 57th Ln

NW 54th Terrace

NW 55th Ln

NW 46th Ln

NW 47th Ln

NW 48th Terrace

NW 113th Ct

NW 111th Ct

NW 41st St

NW 107th Ave

NW 33rd St

NW 30th St

NW 29th St

NW 27th St

NW 25th St

NW 53rd Ln

NW 50th St

NW 109th Ct

NW 111th Ct

NW 41st St

NW 107th Ave

NW 108th Ave

NW 30th St

NW 29th St

NW 27th St

NW 25th St

NW 53rd Ln

NW 50th St

NW 109th Ct

NW 111th Ct

NW 41st St

NW 107th Ave

NW 108th Ave

NW 30th St

NW 29th St

NW 27th St

NW 25th St

NW 53rd Ln

NW 50th St

NW 109th Ct

NW 111th Ct

NW 41st St

NW 107th Ave

NW 108th Ave

NW 30th St

NW 29th St

NW 27th St

NW 25th St

NW 48th MN

NW 109th Ct

NW 111th Ct

NW 41st St

NW 107th Ave

NW 108th Ave

NW 33rd St

NW 30th St

NW 29th St

NW 27th St

NW 25th St

NW 53rd Ln

NW 50th St

NW 109th Ct

NW 111th Ct

NW 41st St

NW 107th Ave

NW 108th Ave

NW 30th St

NW 29th St

NW 27th St

NW 25th St

NW 53rd Ln

NW 50th St

NW 109th Ct

NW 111th Ct

NW 41st St

NW 107th Ave

NW 108th Ave

NW 30th St

NW 29th St

NW 27th St

NW 25th St

NW 53rd Ln

NW 50th St

NW 109th Ct

NW 111th Ct

NW 41st St

NW 107th Ave

NW 108th Ave

NW 30th St

NW 29th St

NW 27th St

NW 25th St

NW 53rd Ln

NW 50th St

NW 109th Ct

NW 111th Ct

NW 41st St

NW 107th Ave

NW 108th Ave

NW 30th St

NW 29th St

NW 27th St

NW 25th St

NW 53rd Ln

NW 50th St

NW 109th Ct

NW 111th Ct

NW 41st St

NW 107th Ave

NW 108th Ave

NW 30th St

NW 29th St

NW 27th St

NW 25th St

NW 53rd Ln

NW 50th St

NW 109th Ct

NW 111th Ct

NW 41st St

NW 107th Ave

NW 108th Ave

NW 30th St

NW 29th St

NW 27th St

NW 25th St

NW 53rd Ln

NW 50th St

NW 109th Ct

NW 111th Ct

NW 41st St

NW 107th Ave

NW 108th Ave

NW 30th St

NW 29th St

NW 27th St

NW 25th St



3000 ft