

RESOLUTION No.17-56

A RESOLUTION OF THE MAYOR AND THE CITY COUNCIL OF THE CITY OF DORAL, FLORIDA, APPROVING THE AWARD OF INVITATION TO BID #2017-05 “INTERACTIVE SIGNAGE SOLUTIONS” TO INTERMEDIA TOUCH, INC.; AUTHORIZING THE CITY MANAGER TO ENTER INTO AN AGREEMENT WITH INTERMEDIA TOUCH, INC., SUBJECT TO APPROVAL AS TO FORM AND LEGAL SUFFICIENCY BY THE CITY ATTORNEY, FOR THE PURCHASE AND CONFIGURATION OF TWO (2) INTERACTIVE KIOSKS FOR CITY FACILITIES, IN AN AMOUNT NOT TO EXCEED \$49,690.00, AND TO EXPEND BUDGETED FUNDS IN FURTHERANCE HEREOF; PROVIDING FOR IMPLEMENTATION; AND PROVIDING FOR AN EFFECTIVE DATE

WHEREAS, on March 12, 2017, the City of Doral (the “City”) issued Invitation to Bid #2017-05 for “Interactive Signage Solutions” (the “ITB”) for the purchase of information kiosks for City facilities; and

WHEREAS, in response to the ITB, three (3) bids were received by the advertised deadline, with all three meeting the bid criteria; and

WHEREAS, Intermedia Touch, Inc. was found to be a responsible and responsive bidder, providing the best interactive signs solution for the City; and

WHEREAS, staff has recommended the Mayor and City Council authorize the City Manager to enter into agreement Intermedia Touch, Inc. for the purchase of two (2) interactive kiosks for City Facilities, in an amount not to exceed \$49,690.00.

NOW, THEREFORE, BE IT RESOLVED BY THE MAYOR AND CITY COUNCIL OF THE CITY OF DORAL, FLORIDA, AS FOLLOWS:

Section 1. Recitals. The above recitals are confirmed, adopted, and incorporated herein and made a part hereof by this reference.

Section 2. Approval of Award. Invitation to Bid #2017-05 “Interactive Sign Solution” is hereby awarded to Interactive Touch, Inc., subject to the entering into an agreement with the City on the same or substantially similar terms as presented in Interactive Touch, Inc.’s submittal, attached hereto as Exhibit “A”, which is incorporated and made a part hereof by this reference. The award of the ITB does not in and of itself vest Interactive Touch, Inc. with any contractual rights.

Section 3. Authorization. The City Manager is hereby authorized to execute such agreements and other contractual documents, subject to approval by the City Attorney as to form and legal sufficiency, as may be necessary to procure two (2) interactive sign kiosks and corresponding software for City facilities in the amount of \$49,690.00. The City Manager is authorized to expend budgeted funds in furtherance hereof.

Section 4. Implementation. The City Manager and City Attorney are hereby authorized to take such further action as may be necessary to implement the purpose and provisions of this Resolution.

Section 5. Effective Date. This Resolution shall take effect immediately upon adoption.

The foregoing Resolution was offered by Councilmember Fraga who moved its adoption. The motion was seconded by Councilmember Rodriguez and upon being put to a vote, the vote was as follows:

Mayor Juan Carlos Bermudez	Yes
Vice Mayor Pete Cabrera	Not Present at Time of The Vote
Councilwoman Christi Fraga	Yes
Councilwoman Claudia Mariaca	Yes
Councilwoman Ana Maria Rodriguez	Yes

PASSED AND ADOPTED this 12 day of April, 2017.



JUAN CARLOS BERMUDEZ, MAYOR

ATTEST:



CONNIE DIAZ, CMC
CITY CLERK

APPROVED AS TO FORM AND LEGAL SUFFIENCY
FOR THE USE AND RELIANCE OF THE CITY OF DORAL ONLY:



WEISS, SEROTA, HELFMAN, COLE & BIERMAN, P.L.
CITY ATTORNEY

EXHIBIT “A”

INTERMEDIA TOUCH

PROPOSAL 0316-058

ITB# 2017-05 INTERACTIVE SIGNAGE SOLUTIONS

INTERMEDIA TOUCH INC
2600 NW 75 Avenue, Suite 200
Miami, FL 33122

www.intermediatouch.com



March 21, 2017

Dear City of Doral,

We are very excited and welcome the opportunity to work on your digital signage and content needs for the City of Doral. We have studied the materials you supplied and listened to your requests and now have a better understanding of what needs to be done to accomplish your goals.

The following documents summarize the key points of our previous discussions and serve as an outline to assist you in evaluating your options:

- Hardware
- Software
- Training
- Terms and Conditions
- Maintenance and Support

Project activities will include evaluating, planning, developing and deployment. All of these can be managed by Intermedia Touch along with a point of contact from your team. Our work will be outlined in phases with associated content needs and launch dates.

We will devote every effort to ensuring the highest caliber of deliverable and look forward to working with you.

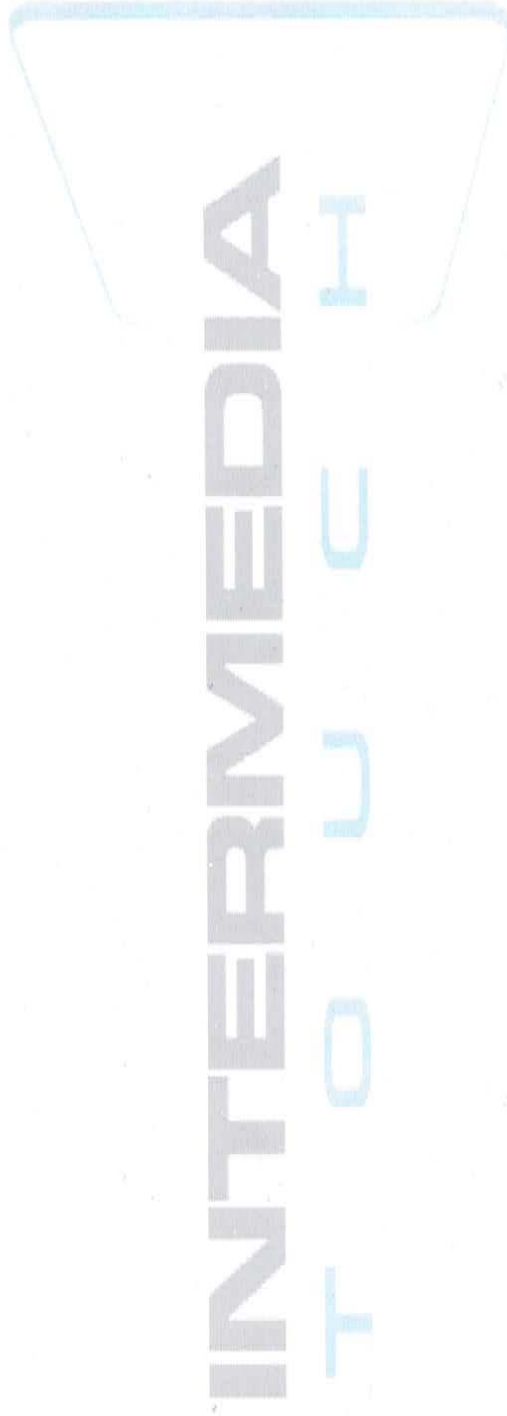
Sincerely,

Cristina Miller
President & CEO
Intermedia Touch Inc.

www.intermediatouch.com
Proposal 0317-058, ITB#2017-05

Table of Contents

Project Quotes.....	3
Hardware.....	3
Software : 22MILES License Fees	5
Maintenance & Support.....	9
Payment Terms and Conditions.....	10



PROJECT QUOTES

Hardware: 70" Interactive Outdoor Extreme Kiosk (Available in White or Black)



Qty	Model#	Description	Unit Price	Total
3	CUSTOM	70" Interactive Outdoor Kiosk – Exterior Extreme	\$ 19,040.00	\$ 57,120.00

Features:

Kiosk Computer:
 Industrial Motherboard Model: HB1
 CPU: Intel i3.3.3Ghz
 RAM:DDR3 4GB
 Hard Disk: 500G HDD
 Integrated Net Card, Sound Card, Graphic Card
 2 RS-232 Ports, 6 USB Ports, 1 VGA, 1 10/100M Net Port
 US standard power supply

Monitor:

70" High Brightness Display
 Industrial display TFT LCD monitor
 Brand: LG, SAMSUNG or Innolux monitor
 Brightness: 1500cd/m2
 Contrast: 800:1
 Max. Resolution: 1920x1080
 Surface Hardness: Mohs' hardness rating of 7
 Force<100G; Response Time: less than 10ms

Touch Screen:

Vandal-proof 6 points IR touch screen
 Material: Heat tempered glass with thickness 6mm
 Resolution: 4096-4096
 Deviation of error: <2mm
 Light Transmittance: ≥ 92%
 Surface Hardness: 7 Mohs scale
 Lifetime:50,000,000 times at one single location
 Response time: less than 16 ms
 Touch activation force: 10--100g

Cooling:

Smart air conditioner, auto temperature detection and control

Operating System:

Windows 7, Trial Version

Packing:

Bubble Foam, Carton, EPE foam, Sturdy wooden case

Warranty:

3 Years

Shipping:

Included

3	CUSTOM	Custom Wrapping	\$ 1,025.00	\$ 3,075.00
3	IBR600	Cradlepoint Compact Router	\$ 690.00	\$ 2,070.00
1	MISC	Peripherals, Tools & Accessories	\$ 500.00	\$ 500.00
3	DATA	Verizon 3GB of Data, Monthly Per Unit (12 Months quoted)	\$ 540.00	\$ 1,620.00

Total	\$ 64,385.00*
50% Deposit Due	\$ 32,192.50

Delivery:

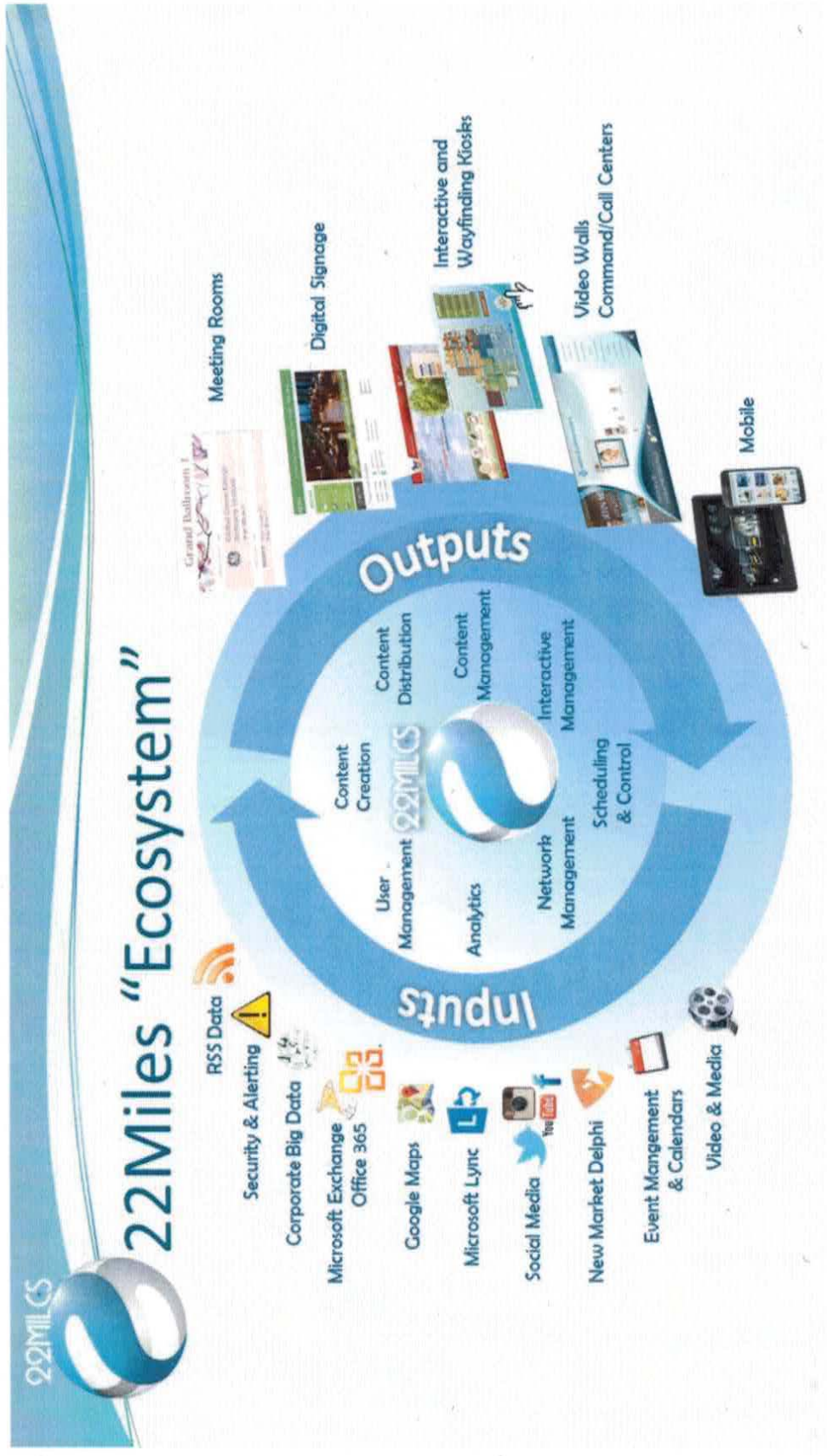
Kiosk Available for delivery 16 weeks from receipt of deposit

*Sales Tax not included

www.intermediatouch.com

Proposal 0317-058, ITB#2017-058

Software: 22MILES Content Management System



Qty	Model#	Description	Unit Price	Total
1	Lic-SPCMS-CLD	<p>Publisher Cloud <small>One time Fee</small></p> <p>Designer software for creating digital signage and interactive content. Includes easy-to-use Wayfinder Map development.</p> <p>Additional Features:</p> <ul style="list-style-type: none"> -Screen Layout Designer/Content Management System -Content update for individual or group kiosks; -Drag and drop to design/update your own Interactive Signage layout -Create slides, assign slides to players, and schedule -Free slide templates access in Template Center -Update Interactive Signage info, AdSign, events, feeds, media, and much more -Multi-level admin rights -System monitoring -Ready for system expansion -Map Designer/CMS for maps and hotspots -Drag and drop to update maps, places, rooms, routes, kiosk locations, facility icons, media, and much more -1st Year Software Maintenance & Technical Support Included 	\$ 2,495.00	\$ 2,495.00



Qty	Model#	Description	Unit Price	Total
3	LIC-TDPL-AD	<p>22Miles Interactive Unit License <small>One time Fee</small></p> <p>Player software for digital signage and interactive content.</p> <p>Features</p> <ul style="list-style-type: none"> • Layout of rotating slides and support for images, video, flash and web content • Support for love data through XML and other third party databases and feeds • Group slides together and schedule • Widgets supported: Slideshow, RSS feeds, events, news, weather, photo/video. Album, twitter, QR codes and more • Multi-Touch Support • Unlimited buttons • Multi-Language Support • Screensaver Mode for when interactive content is idle • Interactive Google Map Interface with icons and popup info windows • First year software maintenance and technical support included • Optional additional year software maintenance \$ 255 	\$ 1,595.00	\$ 4,785.00
1	Lic-CM-Lite	<p>Content Manager Lite <small>One time Fee</small></p> <p>Web-based Content Manager Lite for Cloud and Enterprise. Allows no-tech users to update content easily.</p> <p>Additional Features:</p> <ul style="list-style-type: none"> -Update text, images, assets, directory and other content; -Schedule content; -Manage kiosks 	\$ 295.00	\$ 295.00

Qty	Model#	Description	Unit Price	Total
1	Svc-CFGREMOTE	4-hour Remote Configuration Service	\$ 450.00	\$ 450.00
1	Spt-TRNREMOTE	4-hour Online Training	\$ 950.00	\$ 950.00
1	Spt-MTs1VRTL	First Year Standard Software Warranty & Support	Included	Included
3	Svc-HOSTPLY1	1-year Non-Video Wall Cloud Hosting	\$ 150.00	\$ 450.00

Total \$ 9,425.00*
50% Deposit Due \$ 4,712.50

Delivery

Approximately 3 weeks from receipt of Deposit

*Sales Tax not included



Technical Support is included for the first 6 months of the project.

Optional: Maintenance & Support Complete Care Support Plan

- Repairs & Troubleshooting
 - Includes 4 hours (Non-Rollover)

- Maintenance
 - Monthly site visit for systems performance Check
 - Documentation Updates

- Dust Cleaning (Internal Components)
- 24/4 System Monitoring (Hardware)
- Hardware Warranty Replacement Support
 - Includes communicating with manufacturers on warranty replacement

- Response Time
 - 4 hours

- Support Hours
 - 24/7 Monday –Sunday All Day

- Travel Charge
 - \$ 50.00 per visit

- On Call – Per Incident Support
 - Rate \$ 85 per hour

Plan Sub-Total \$ 500.00 Monthly (3 Units)

Note: Service Calls not a Complete Care are billed at \$ 125.00 Per hour plus travel

Terms and Conditions

- Hardware Payment Terms: 50% Deposit , 50% upon delivery
- Integrator proposes to furnish Integration and materials complete in accordance with the above specifications
- 50% Deposit is non-refundable and commits the purchaser to the entirety of the project.
- Software Payment Terms: 50% Deposit , 50% upon approval
- Integrator proposes to furnish Integration and materials complete in accordance with the above specifications
- All prices are FOB Origin; Shipping, Handling and Traveling charges will be invoiced as incurred; All kiosks or large item orders will include crate costs to be incurred over all shipping costs.
- The method of payment of the Price by the Client to Intermedia Touch shall be by: Check, ACH Transfer, Wire Transfer or Credit Card. US domestic Credit Card payment subject to 3% processing fee. International Credit Card payment subject to at least 7% processing fee, which varies by country.
- Client is responsible for all taxes except those specifically billed by Intermedia Touch.
- Professional Services: Fixed Hour Service packages: The service package sections of the quote include all Creative and/or Professional Services needed for the project and are estimated to the best of our abilities at the time of the quotation. Services typically include layout/Slide Design, Map Design, Content Input, 3rd Party Software/Systems Integration, Software Customization, Software Installation, Configuration, Training, Project Management, and similar. Intermedia Touch quoted these services based on the project scope of work estimated with client provided information. Client is responsible to provide accurate information, correct content and feature specifications in order for Intermedia Touch to quote accurately. Intermedia Touch will inform Client in advance if additional cost might be involved upon change to the scope of work, continuous change order requests, or if it is determined inaccurate information provided from the outset. Hourly service package: Client will be billed based on actual hours of work performed.
- Travel expenses: Onsite setup, configuration, training or support is optional. Upon Client's prior approval, Client is responsible for travel expenses incurred by Intermedia Touch or 22MILES personnel. All expenses included in the quote are estimates and will be billed separately based upon actual expenses.
- Regular lead time is 6-8 weeks for software customization once all of requested information has been received; 6-8 weeks for content creation and creative services once all of the creative materials have been received; 2-3 weeks for media player hardware; 2-4 weeks for display hardware; 6-8 for interactive video wall hardware; 7-10 for kiosk enclosures once the design has been finalized; the final installation date will be determined once all of the creative materials have been received
- Additional miscellaneous materials may be needed to complete install. If these items are purchased by Intermedia Touch or 22MILES, client will be billed separately.

- Prices are effective for 90 days from the date of this quote.
- 22MILES has copyrights and ownership to all 22MILES logos, trademarks, and developed software.
- Based on project requirements, and/or upon Clients' request, a Service Level Agreement (SLA) may be required to be signed prior to project initiation. If there's no SLA signed, the 22MILES standard warranty and support policy will apply.
- Limitation of Liability: In no event shall 22MILES or Intermedia Touch be liable to the Client or any third party for any damages, including any lost profits, lost savings or other incidental, consequential or special damages arising out of the operation of or inability to operate the software/system.
- We will coordinate with other related trades, as required. Additional equipment required to achieve any Interface or Integration, unless specified in our proposal, can be made available as an above contract item.
- All equipment and materials remain the property of Integrator until paid in full.
- Legal interest commences 30 days after billing. Purchaser/Customer agrees to pay reasonable Attorney's fees upon default of payment.
- Finance charges of 1.5% will be charges monthly for past due balances.
- All return equipment is subject to a 25% restocking fee



All pricing, notes, payment terms and conditions are hereby accepted.

 Signature _____
 Typed or Printed Name

 Title: _____
 Date