

RESOLUTION No. 17-176

A RESOLUTION OF THE MAYOR AND THE CITY COUNCIL OF THE CITY OF DORAL, FLORIDA, APPROVING THE IMPLEMENTATION OF THE DORAL TRANSIT SYSTEM IMPROVEMENTS TO INCLUDE ROUTE ALIGNMENT ADJUSTMENTS TO ROUTES 1, 2, AND 3, WEEKDAY SERVICE HOUR EXPANSIONS ON ROUTE 1 AND 2, AND COMMENCING ROUTE 2 SATURDAY SERVICE FOR AN APPROXIMATE ADDITIONAL TOTAL ANNUAL COST OF \$297,000.00; AND PROVIDING FOR AN EFFECTIVE DATE

WHEREAS, since its inception, the City of Doral (the “City”) Trolley System (“DTS”) has grown from one (1) trolley on one (1) route to eleven (11) trolleys on three (3) routes; and

WHEREAS, the target ridership goals set forth from inception of the system are being met and are substantially exceeded on all three routes; and

WHEREAS, the City Public Works Department continuously reviews the Doral Trolley to make improvements to evaluate the route alignments and schedules to meet the City’s growth demands; and

WHEREAS, after careful review, Staff has recommended that the City Council approve the implementation of the DTS improvements to include route alignment adjustments to Routes 1, 2, and 3, weekday service hour expansions on Route 1 and 2, and commencing Route 2 Saturday service for an approximate additional total annual cost of \$297,000.00; and

WHEREAS, the funding for the expanded trolley service is being budgeted in the FY 2017 – 2018 Transportation Fund under account 101.80005.500341 (\$990,000) and the PTP Fund under account 106.80005.500341 (\$1,635,000); and

WHEREAS, the City Council finds that approving the modification to the Doral Transit System and expanded service hours in the best interest of the City.**NOW, THEREFORE, BE IT RESOLVED BY THE MAYOR AND CITY COUNCIL OF THE CITY OF DORAL, FLORIDA, AS FOLLOWS:**

Section 1. Recitals. The above recitals are confirmed, adopted, and incorporated herein and made part hereof by this reference.

Section 2. Approval. The City Council hereby approves the adoption of the modifications to the Doral Transit System routes and schedules.

Section 3. Implementation. The City Manager and City Attorney are hereby authorized to take such action as may be necessary to implement the purpose and the provisions of this resolution.

Section 4. Effective Date. This Resolution shall take effect immediately upon adoption.

The foregoing Resolution was offered by Vice Mayor Cabrera who moved its adoption. The motion was seconded by Councilmember Rodriguez and upon being put to a vote, the vote was as follows:

Mayor Juan Carlos Bermudez	Yes
Vice Mayor Pete Cabrera	Yes
Councilwoman Christi Fraga	Yes
Councilwoman Claudia Mariaca	Yes
Councilwoman Ana Maria Rodriguez	Yes

PASSED AND ADOPTED this 27 day of September, 2017.



JUAN CARLOS BERMUDEZ, MAYOR

ATTEST:



CONNIE DIAZ, CMC
CITY CLERK

APPROVED AS TO FORM AND LEGAL SUFFIENCY
FOR THE USE AND RELIANCE OF THE CITY OF DORAL ONLY:



WEISS, SEROTA, HELFMAN, COLE & BIERMAN, P.L.
CITY ATTORNEY

Exhibit "A"



DORAL TRANSIT SYSTEM ROUTE IMPROVEMENTS



May 2, 2017

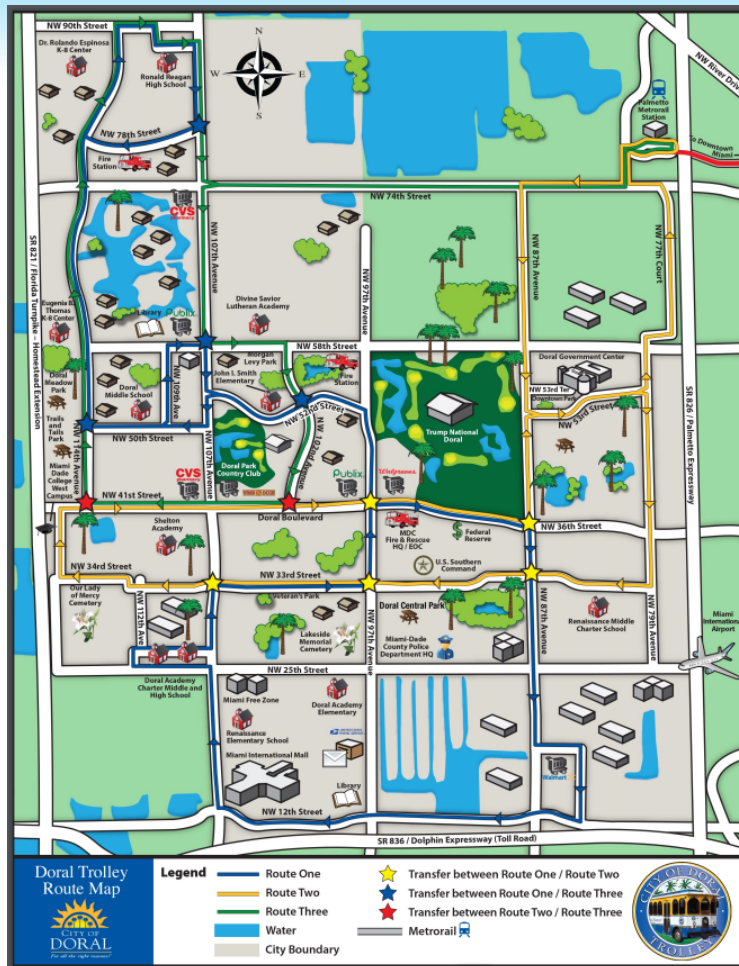


HISTORY

The Doral Trolley System (DTS) was launched on February 1, 2008 as a two-year Pilot Program.

The objective of the Doral Transit System is to:

- Provide efficient and effective public transportation for residents linking them to work, shopping and school locations
- Provide alternatives to ease commute into the City's employment areas
- Complement Miami-Dade Transit (MDT) service
- Position the City to respond to future public transportation opportunities that will result from street extensions, transit projects, and the build out of the City Urban Core





RIDERSHIP

Fiscal Year	Trolley Ridership
Feb. 08 – Sept. 08	41,634
Oct. 08 – Sept. 09	70,730
Oct. 09 – Sept. 10	99,220
Oct. 10 – Sept. 11	185,755
Oct. 11 – Sept. 12	282,194
Oct. 12 – Sept. 13	312,862
Oct. 13 – Sept. 14	362,891
Oct. 14 - Sept. 15	443,965
Oct. 15 – Sept. 16	556,748

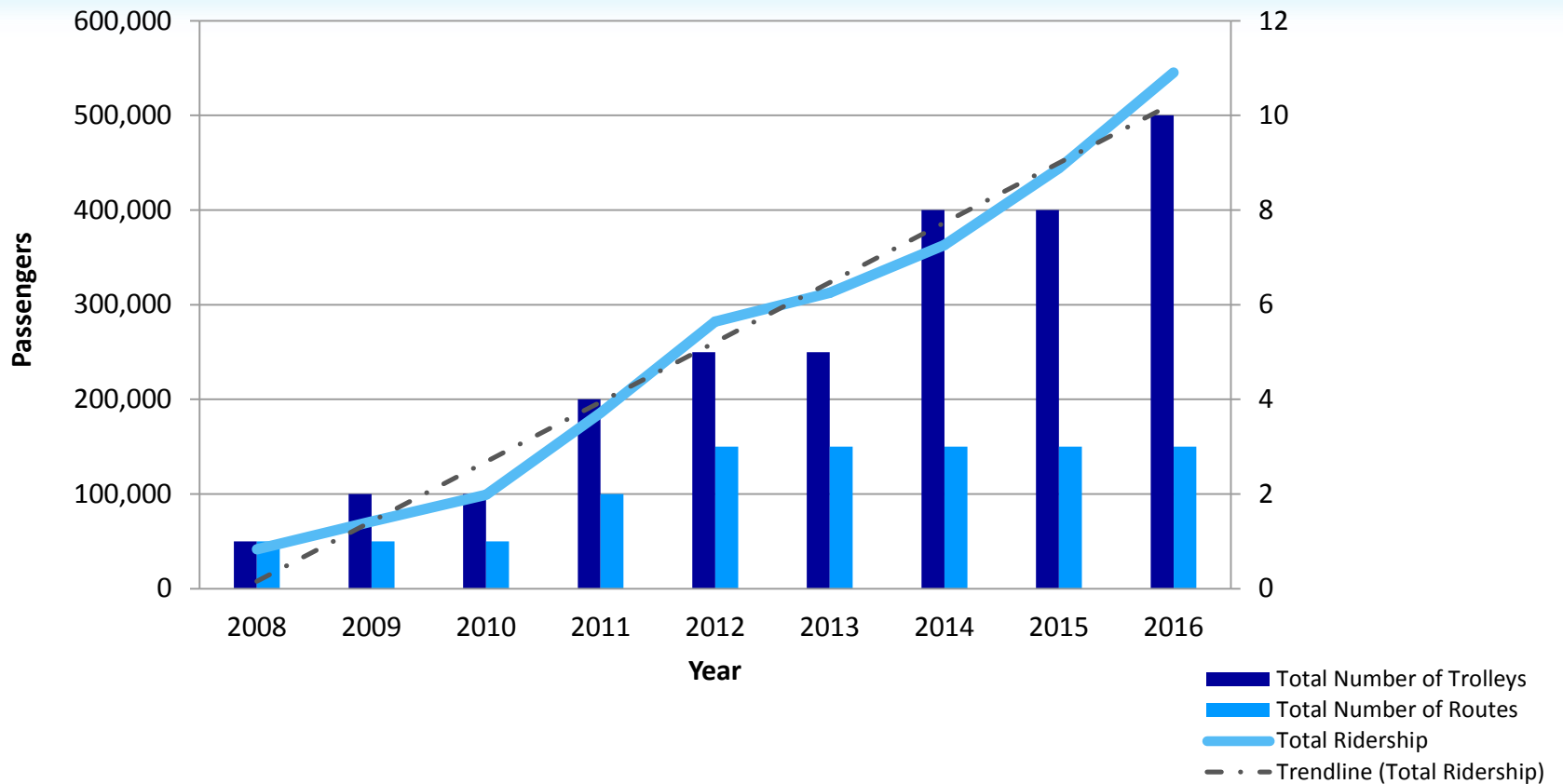


Route	Hourly Ridership
1	22
2	13
3	21



RIDERSHIP TRENDS

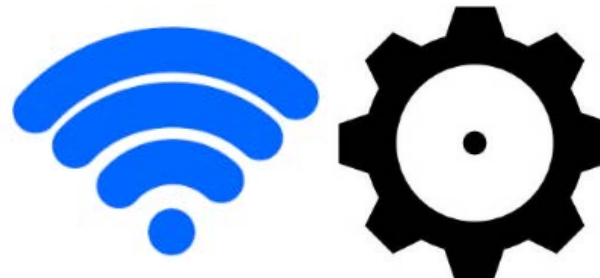
Doral Transit System





TROLLEY FLEET

Trolley	Length	Fuel Type	Year	Make / Model	Seating Capacity	ADA Seating
DT01	31'	Biodiesel	2009	Freightliner Supreme	26 - 30	2
DT03	31'	Biodiesel	2010	Freightliner Supreme	26 - 30	2
DT04	32'	Biodiesel	2011	Freightliner Supreme	26 - 30	2
DT05	33'	Biodiesel	2011	Freightliner Supreme	30 - 34	2
DT06*	32'	Gasoline	2013	Ford Hometown	24 - 28	2
DT07**	30'	Biodiesel	2014	Freightliner Hometown	24 - 28	2
DT08**	30'	Biodiesel	2014	Freightliner Hometown	24 - 28	2
DT09**	30'	Biodiesel	2014	Freightliner Hometown	24 - 28	2
DT10**	30'	Biodiesel	2015	Freightliner Hometown	24-28	2
DT11**	30'	Biodiesel	2015	Freightliner Hometown	24-28	2
DT12	32''	Biodiesel	2016	Freightliner Hometown	26-30	2



*Vehicle acquired with Developer Contribution

**Vehicle acquired with grant funding



TROLLEY TRACKER



For next Trolley call:
(305) 593-6710

Route #1: Stop #1001

www.cityofdoral.com

*Do you want to know
how long until the next
trolley arrives?*

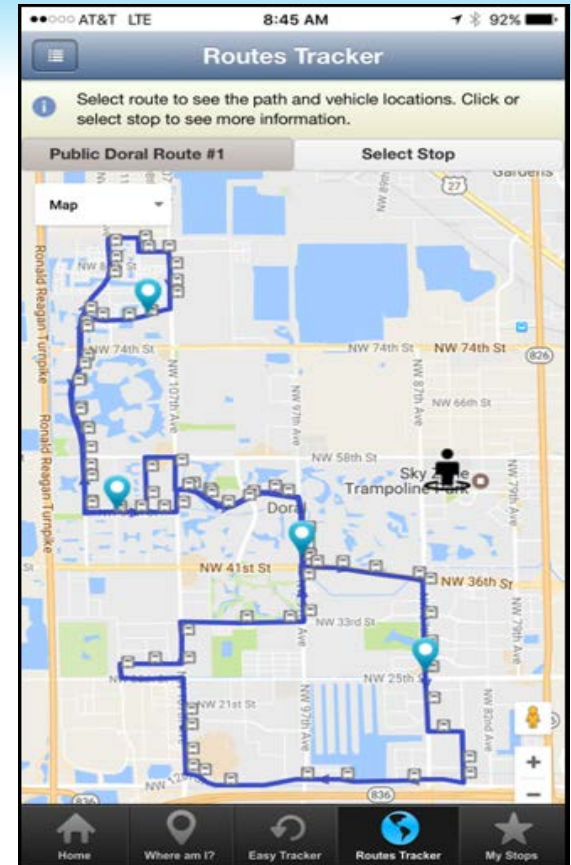
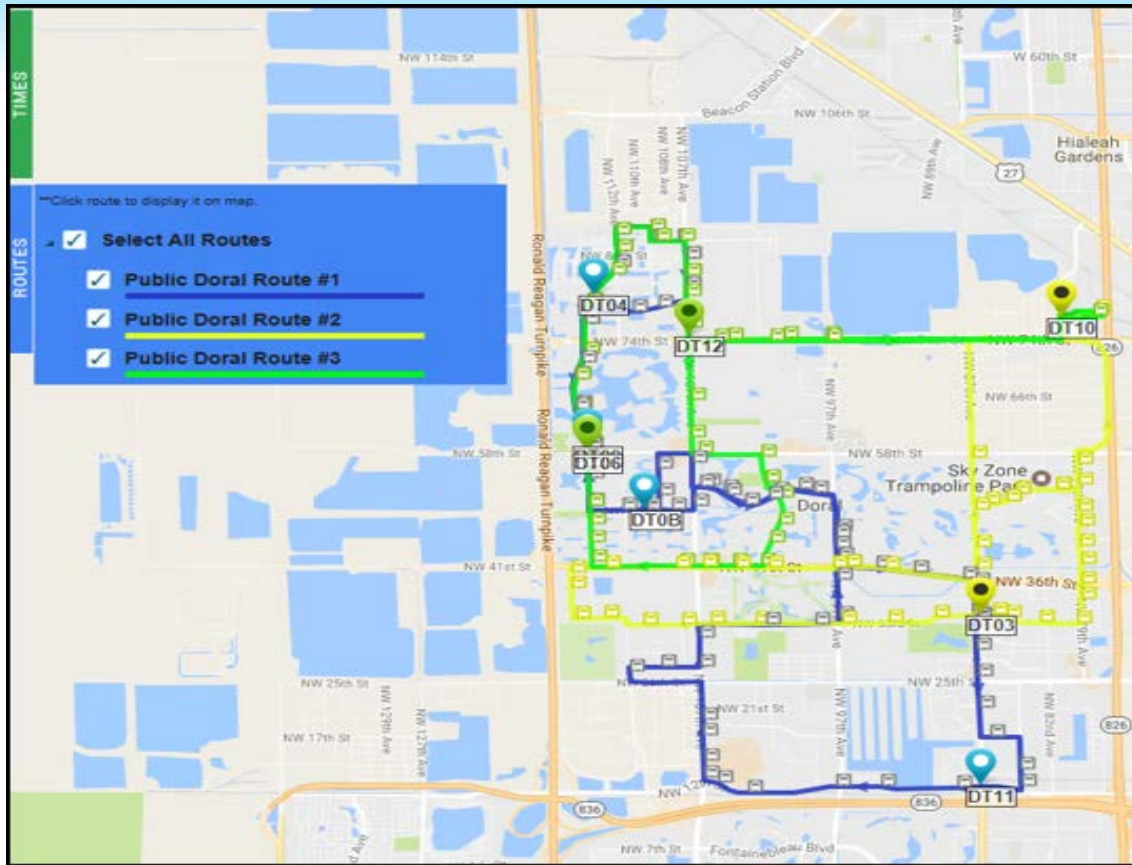
**Dial
305.593.6710**

**Follow the prompt and
enter the STOP
number and you will
be informed
approximately when
the Doral Trolley will
arrive at your stop.**





ONLINE TROLLEY TRACKER





TRIP PLANNER

(MIAMI-DADE TRANSIT TRACKER APP)



AT&T LTE 4:06 PM 91%

Trip Planner Trip Plan

Map data ©2017 Google

A 8401 NW 53rd Terrace, Miami, FL 33166, USA

15.3 mi. About 55 mins

Walk to NW 53 St@Op # 8325
About 3 mins

NW 53 St@Op # 8325
DLOOP2 Bus towards Doral Route 2 North
4:30pm–4:39pm (9 mins, 3 stops)
Service run by [Miami-Dade Transit](#)

Palmetto Metrorail Station
Walk to Palmetto Station
About 2 mins

Palmetto Station
RAIL Train towards Dadeland South
4:52pm–5:21pm (29 mins, 13 stops)
Service run by [Miami-Dade Transit](#)

Government Center
Walk to 111 NW 1st St, Miami, FL 33132, USA
About 2 mins

← → ↻ CLOSE



TRIP PLANNER

(GOOGLE MAPS)

Transportation and Public Works

Last Visited » [Miami-Dade Transit Tracker iPhone and Android apps](#) » [Getting around with Transit](#)

Transit Tracker

Trip Planner

Bus Routes

Get Transit Directions

8401 NW 53 Terrace

111 NW 1 St

Leave ▾ 2/23/2017 11:19AM

[Get directions](#)

Para información en Español llame al 305-891-3131

Metrobus

Metrorail

Metromover

Accessibility

Fares and Transfers

Rider Alert!

[Metrobus Rider Alert - More Info](#)

Reduced fare on select Metrobus Express routes

Intra-County routes 150, 338, 272, 288, 204, 34, and 95 Express Golden Glades will now cost \$2.25 (instead of the current \$2.65).

The 301 Dade-Monroe Express, 302 Card Sound Express, and four 95 Dade-Broward Express routes will remain at the current trip fare.



Getting around with Transit

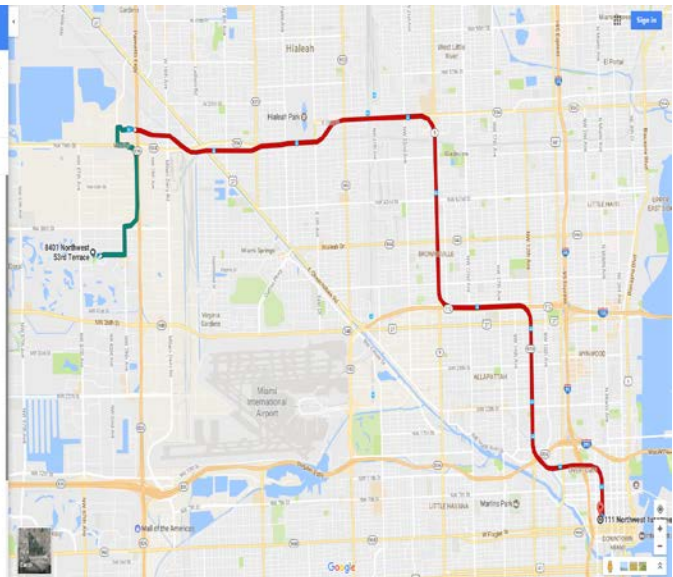
From 8401 NW 53rd Terrace, Miami, FL 33148
to 111 NW 1st St, Miami, FL 33132

4:27 PM - 5:21 PM (54 min)

4:30 PM from 8401 NW 53rd Terrace # 8225
8 min

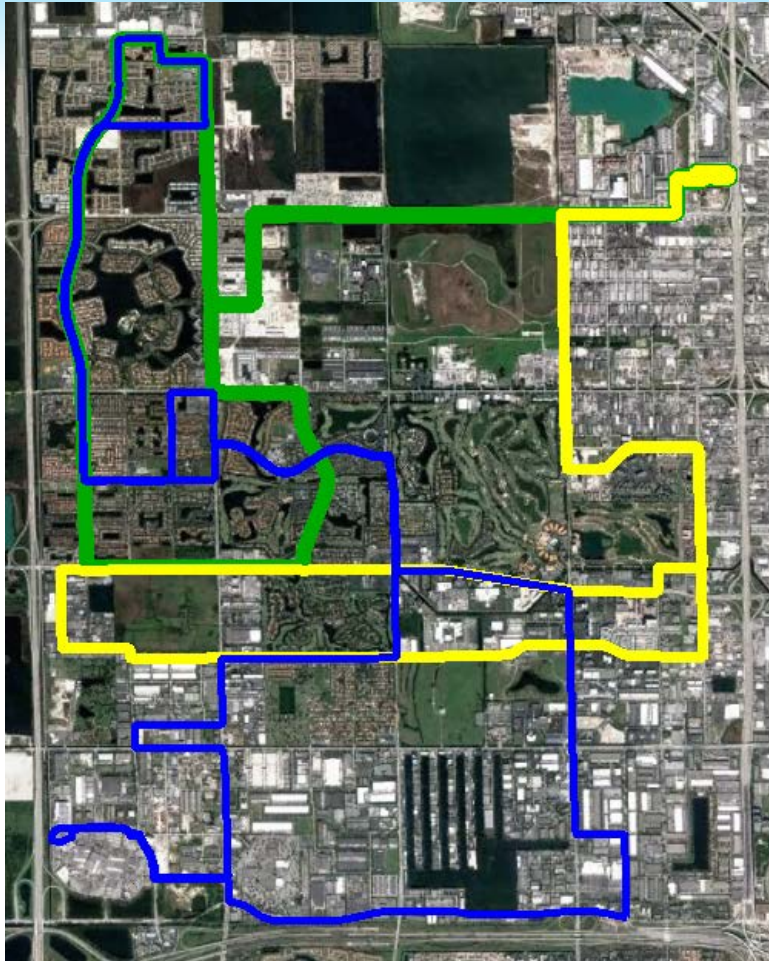
SCHEDULE EXPLORER

- 4:27 PM **8401 NW 53rd Terrace**
Miami, FL 33148
Walk
W about 1 min, 0.1 mi
- 4:30 PM **NW 53 St/Op # 8225**
Doral Route 2 North
W 3 min, 0.3 miles Stop ID: 0-5828002
- 4:39 PM **Palmetto Metrorail Station**
Walk
W about 1 min
- 4:52 PM **Palmetto Station**
Dadeland South
W 20 min, 13.3 miles Stop ID: PAL0413
- 5:21 PM **Government Center**
Walk





ROUTE ALIGNMENTS ADJUSTMENTS



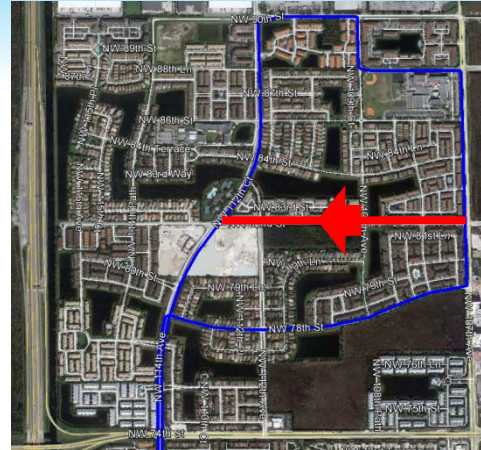
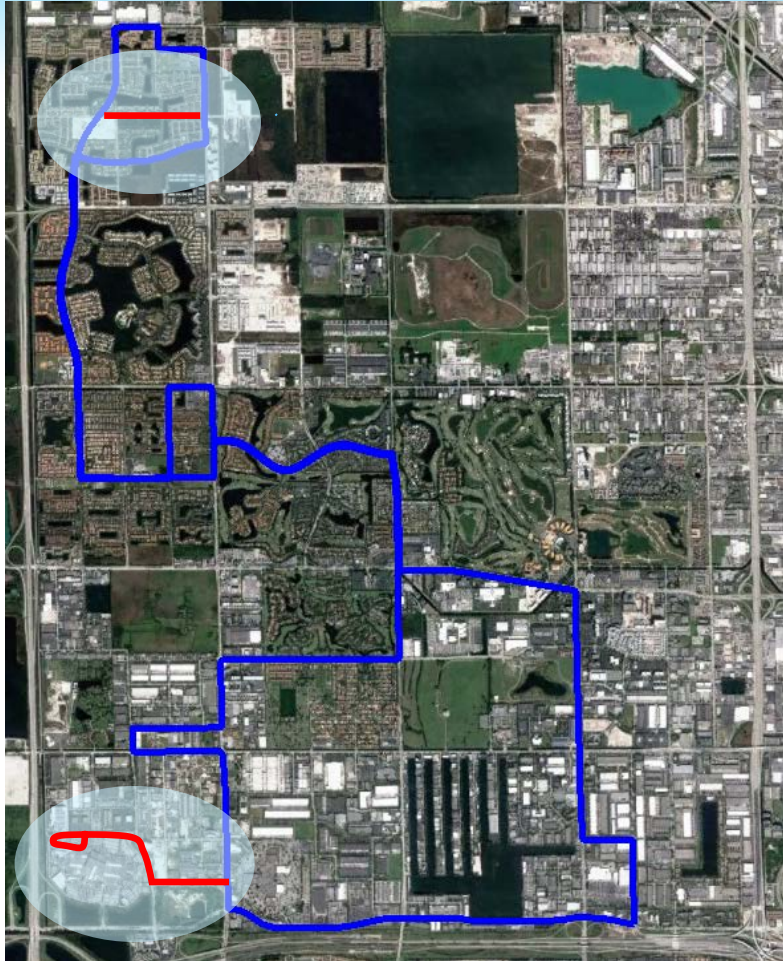
Minor Trolley Route Alignment Adjustments:



- **Route 1:** Service to Dolphin Mall Transit Terminal and Doral Legacy Park.
- **Route 2:** Better service the NW 36 Street and the NW 79 Avenue corridors and Downtown Doral.
- **Route 3:** Service the Doral Math and Science Academy and the communities along NW 104 Avenue between NW 74 Street and NW 66 Street (Landmark).



ROUTE 1

(BLUE ROUTE)



-  Existing Route (21.4 miles)
-  Proposed Route (23.8 miles)



ROUTE 1

(HOURS OF OPERATION)

Existing Route:

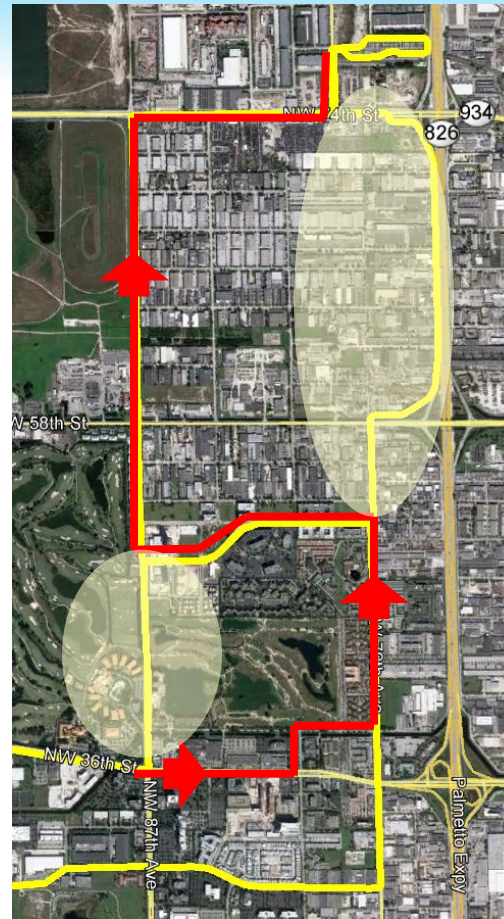
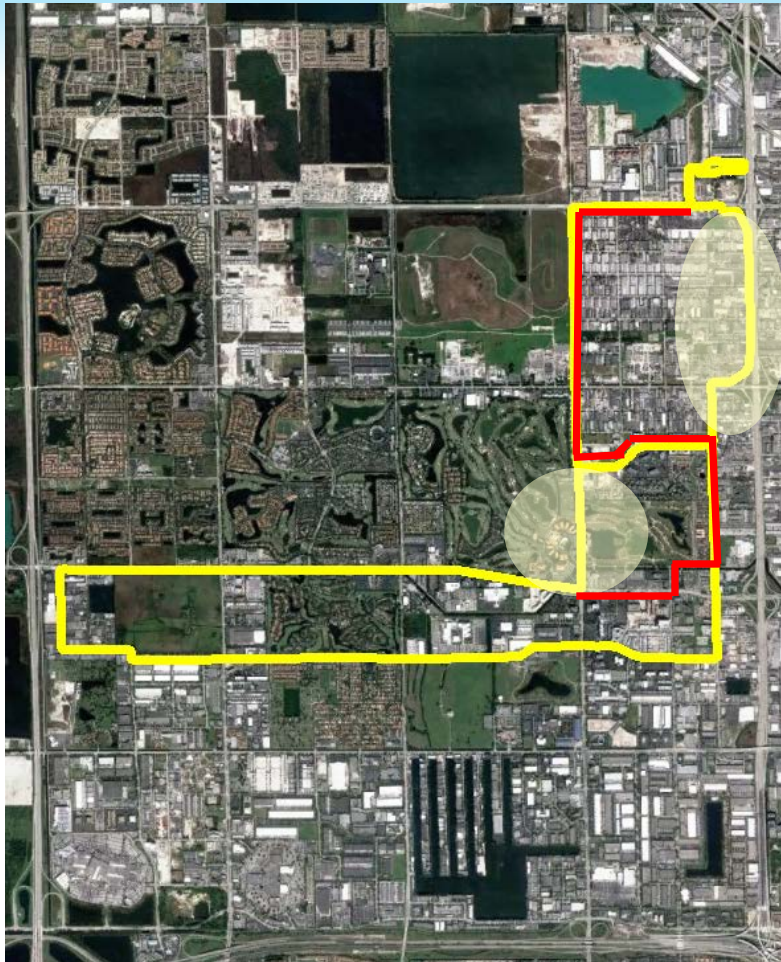
Service	Route	Block	Start of Route		Peak Hr AM End of Route		Peak HR PM Start of Route		End of Route		Actual Hrs
			Time	Location	Time	Location	Time	Location	Time	Location	
Weekday	1	1	5:58 AM	Stop # 1039 (NW 109 Ave S. of NW 90 St)	10:13 AM	Stop #1041 (NW 88 St W. of NW 107 Ave)	2:17 PM	Stop # 1001 (NW 12 St E. of NW 89 Ct)	7:10 PM	Stop #1041 (NW 88 St W. of NW 107 Ave)	9.13
		2	6:20 AM	Stop # 1039 (NW 109 Ave S. of NW 90 St)	-	-	-	-	9:48 PM	Stop #1041 (NW 88 St W. of NW 107 Ave)	15.47
		3	6:20 AM	Stop # 1001 (NW 12 St W. of NW 89 Ct)	-	-	-	-	9:46 PM	Stop #1007 (NW 107 Ave N. of NW 14 St)	15.43
		4	6:00 AM	Stop # 1001 (NW 12 St W. of NW 89 Ct)	10:15 AM	Stop #1007 (NW 107 Ave N. of NW 14 St)	2:20 PM	Stop # 1039 (NW 109 Ave S. of NW 90 St)	7:15 PM	Stop #1007 (NW 107 Ave N. of NW 14 St)	9.17
Saturday	1	1	7:00 AM	Stop # 1039 (NW 109 Ave S. of NW 90 St)	-	-	-	-	6:54 PM	Stop # 1039 (NW 109 Ave S. of NW 90 St)	11.90
		2	7:30 AM	Stop # 1039 (NW 109 Ave S. of NW 90 St)	-	-	-	-	7:24 PM	Stop # 1039 (NW 109 Ave S. of NW 90 St)	11.90
Sunday	1	1	7:00 AM	Stop # 1039 (NW 109 Ave S. of NW 90 St)	-	-	-	-	6:54 PM	Stop # 1039 (NW 109 Ave S. of NW 90 St)	11.90

Modified Route:

Service	Route	Block	Start of Route		End of Route		Actual Hrs
			Time	Location	Time	Location	
Weekday	1	1	6:00 AM	Stop # 1040 (NW 88 St E. of NW 109 Ave)	9:39 PM	Stop # 1040 (NW 88 St E. of NW 109 Ave)	15.65
		2	6:31 AM	Stop # 1040 (NW 88 St E. of NW 109 Ave)	10:10 PM	Stop # 1040 (NW 88 St E. of NW 109 Ave)	15.65
		3	6:00 AM	Stop # 1005 (NW 12 St W. of NW 10500 Blk)	9:48 PM	Stop #1078 (Dolphin Mall)	15.80
		4	6:31 AM	Stop # 1005 (NW 12 St W. of NW 10500 Blk)	10:18 PM	Stop #1078 (Dolphin Mall)	15.78
Saturday	1	1	7:00 AM	Stop # 1005 (NW 12 St W. of NW 10500 Blk)	7:37 PM	Stop #1078 (Dolphin Mall)	12.62
		2	7:47 AM	Stop # 1005 (NW 12 St W. of NW 10500 Blk)	6:49 PM	Stop #1078 (Dolphin Mall)	11.03
Sunday	1	1	7:00 AM	Stop # 1005 (NW 12 St W. of NW 10500 Blk)	7:37 PM	Stop #1078 (Dolphin Mall)	12.62



ROUTE 2 (YELLOW ROUTE)



- Existing Route (15.4 miles)
- Proposed Route (16.7 miles)





ROUTE 2

(HOURS OF OPERATION)

Existing Route:

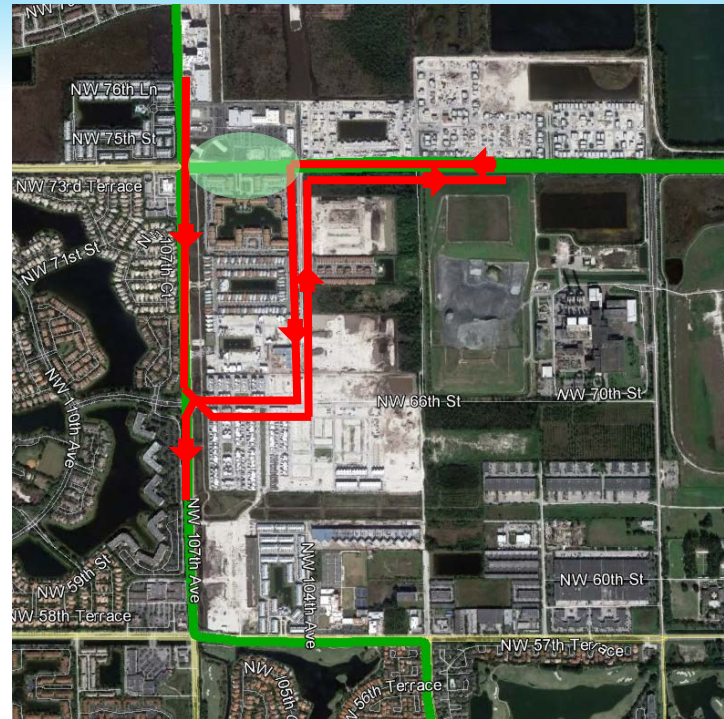
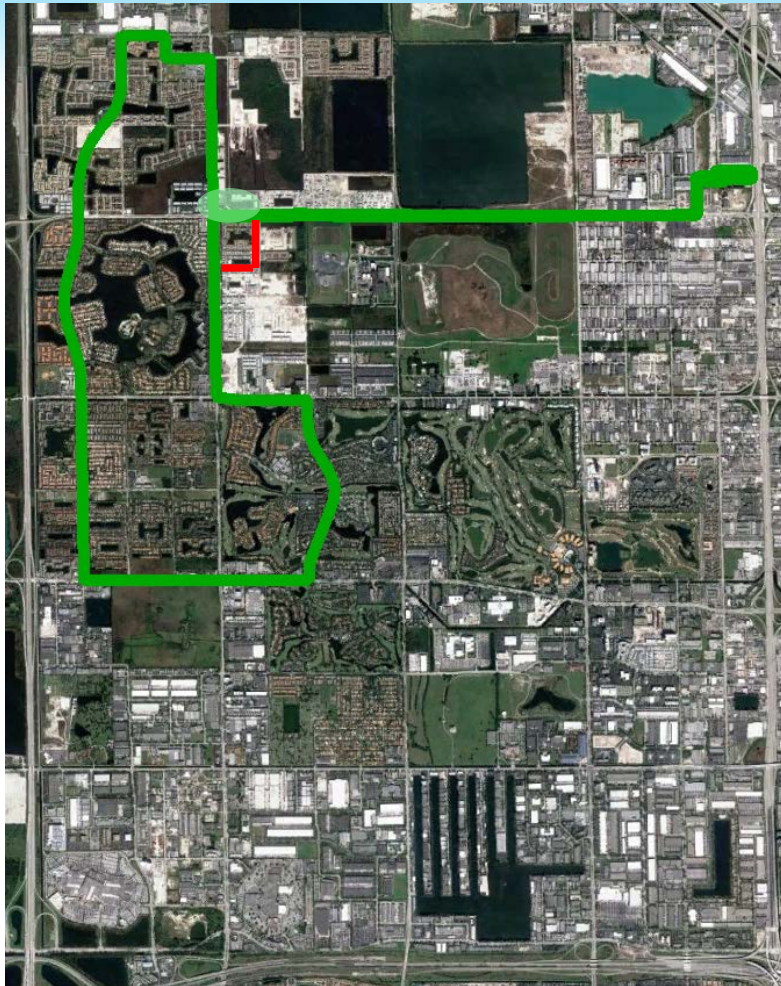
Service	Route	Block	Start of Route		End of Route		Actual Hrs
			Time	Location	Time	Location	
Weekday	2	1	6:00 AM	Stop # 2001 (Palmetto Metrorail Station)	8:03 PM	Stop #2001 (Palmetto Metrorail Station)	14.05
		2	6:30 AM	Stop # 2001 (Palmetto Metrorail Station)	7:33 PM	Stop #2001 (Palmetto Metrorail Station)	13.05

Modified Route:

Service	Route	Block	Start of Route		End of Route		Actual Hrs
			Time	Location	Time	Location	
Weekday	2	1	6:00 AM	Stop # 2001 (Palmetto Metrorail Station)	9:38 PM	Stop #2001 (Palmetto Metrorail Station)	15.63
		2	6:49 AM	Stop # 2001 (Palmetto Metrorail Station)	8:47 PM	Stop #2001 (Palmetto Metrorail Station)	13.97
Saturday	2	1	6:50 AM	Stop # 2001 (Palmetto Metrorail Station)	7:53 PM	Stop # 2001 (Palmetto Metrorail Station)	13.05



ROUTE 3 (GREEN ROUTE)



Existing Route (14.7 miles)

Proposed Route (15.7 miles)



ROUTE 3

(HOURS OF OPERATION)

Existing Route:

Service	Route	Block	Start of Route		End of Route		Actual Hrs
			Time	Location	Time	Location	
Weekday	3	1	6:00 AM	Stop #3001 (Palmetto Metrorail Station)	9:13 PM	Stop #3001 (Palmetto Metrorail Station)	15.22
		2	6:30 AM	Stop #3001 (Palmetto Metrorail Station)	8:43 PM	Stop #3001 (Palmetto Metrorail Station)	14.22
Saturday	3	1	7:00 AM	Stop #3001 (Palmetto Metrorail Station)	7:11 PM	Stop #3001 (Palmetto Metrorail Station)	12.18

Modified Route:

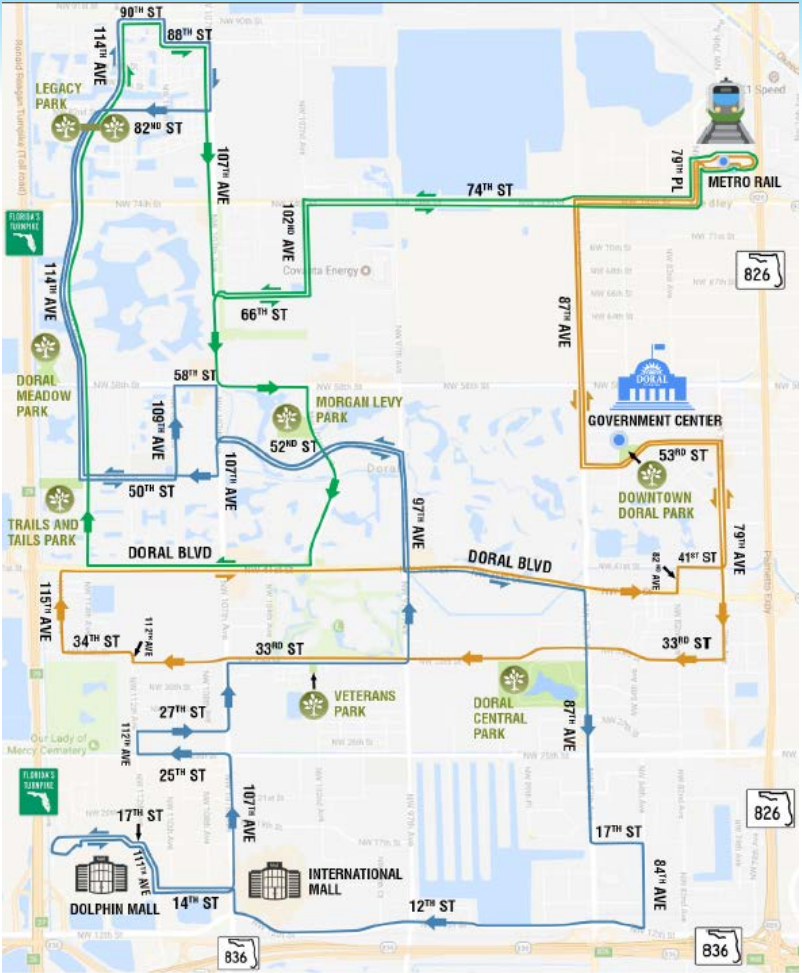
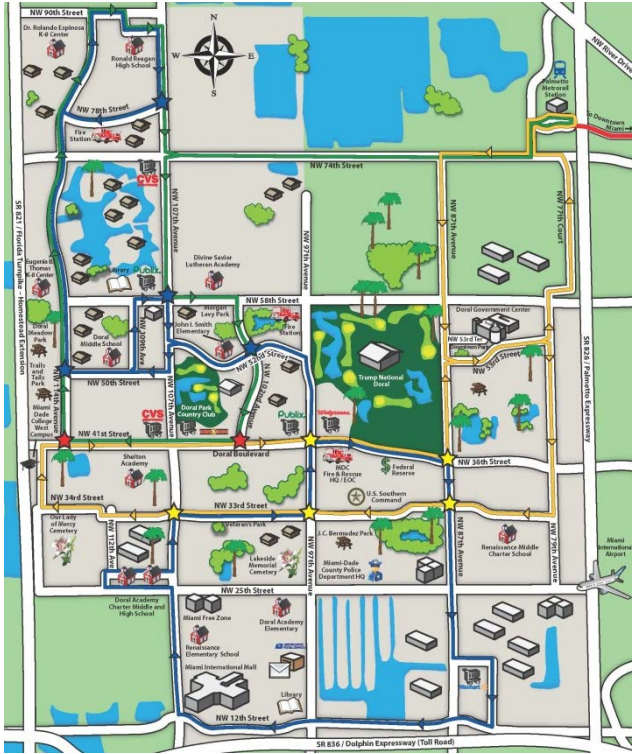
Service	Route	Block	Start of Route		End of Route		Actual Hrs
			Time	Location	Time	Location	
Weekday	3	1	5:50 AM	Stop #3001 (Palmetto Metrorail Station)	9:28 PM	Stop #3001 (Palmetto Metrorail Station)	15.63
		2	6:30 AM	Stop #3001 (Palmetto Metrorail Station)	8:56 PM	Stop #3001 (Palmetto Metrorail Station)	14.43
Saturday	3	1	6:50 AM	Stop #3001 (Palmetto Metrorail Station)	6:56 PM	Stop #3001 (Palmetto Metrorail Station)	12.10



RIDERS GUIDE

(SHORT TERM IMPROVEMENTS)

Trolley Riders Guides:
Develop new artwork and branding for the Trolley Rider Guides.



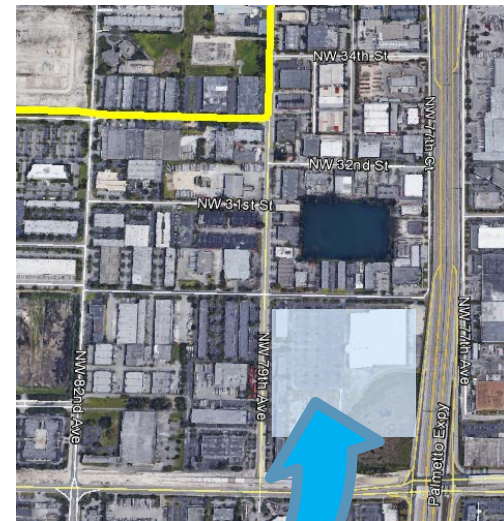
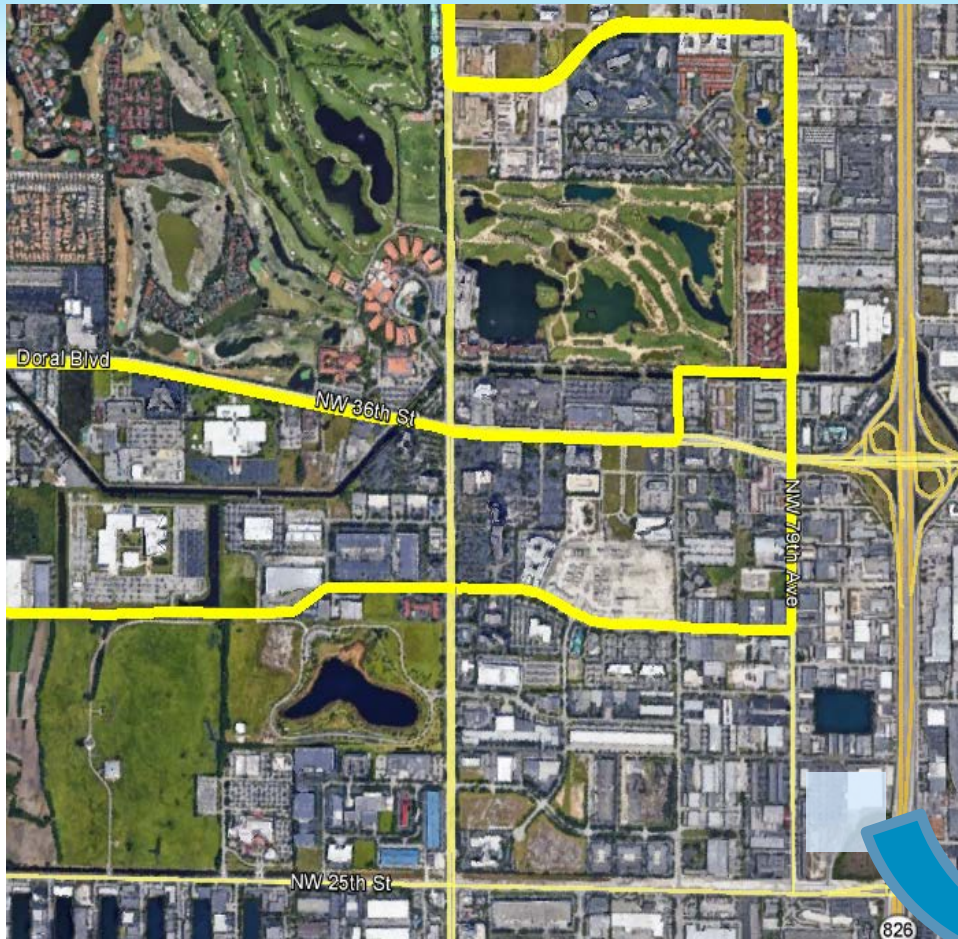


ADDITIONAL IMPROVEMENTS



ROUTE 2

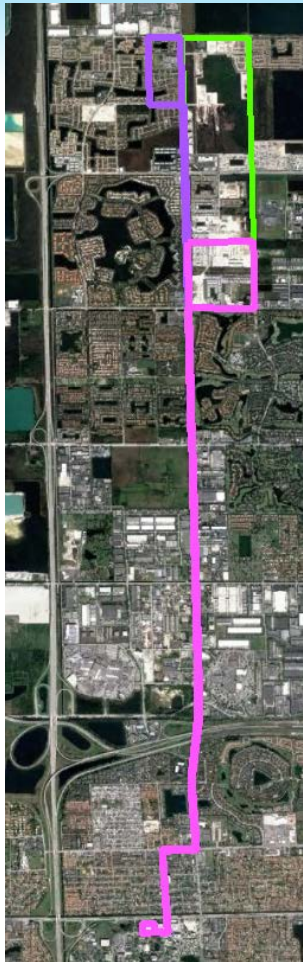
(SHORT TERM IMPROVEMENT)





FIU TROLLEY ROUTE

(MID TERM IMPROVEMENT)

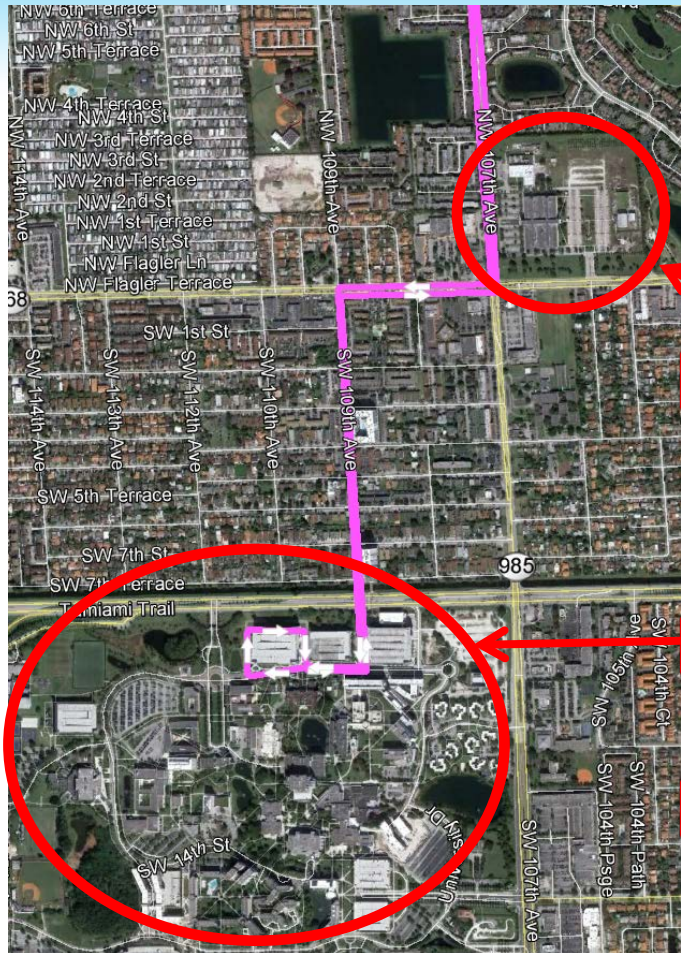


FIU Trolley Expansion Study:

- PWD was awarded \$28,000.00 Grant from the Miami-Dade County Metropolitan Planning Organization (MPO) to complete the study.
- MPO issued City Notice to Proceed on November 1, 2016.
- Three (3) conceptual trolley route alignments were developed that would provide service within the City of Doral via NW 107 Avenue to both the Main Campus and the Engineering Campus.
- Proposed alignments vary in the north end of the route.
- Study is ongoing and will be completed by end of July 2017.



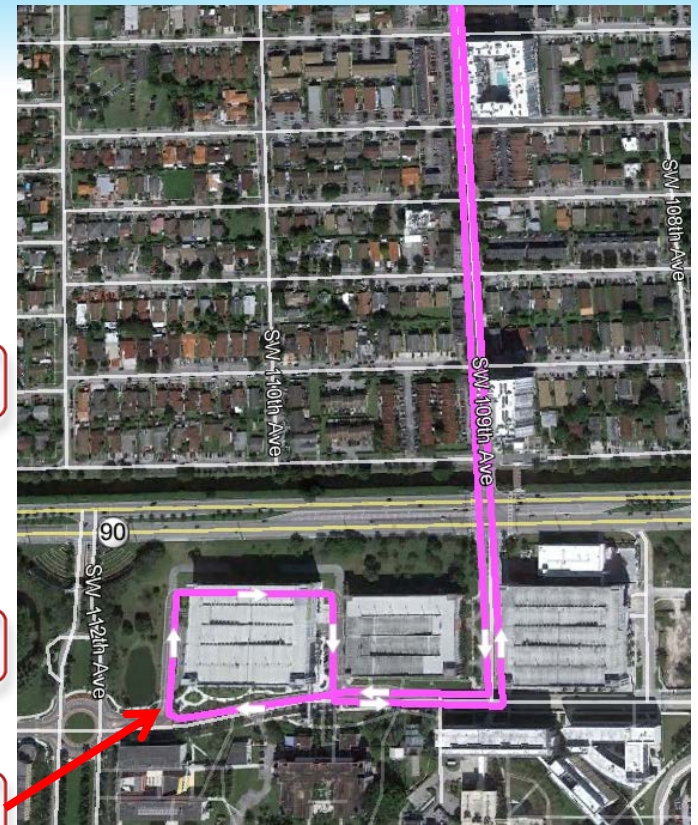
PROPOSED FIU TROLLEY ROUTES



Engineering Campus

Main Campus

Parking Garage (PG6)



FIU Main Campus: Service to the newly constructed Parking Garage (PG6).



QUESTIONS