

WORK ORDER No. 2 FOR PROFESSIONAL SERVICES

TO: TGSV Enterprises, Inc.
1301 West 68th Street, Suite A
Hialeah, FL 33014

DATE: February 11, 2021

The City of Doral authorizes the firm of TGSV Enterprises, Inc. to proceed with the provision of General Construction Services for the "Security Improvements" at the Doral Government Center. Where TGSV Enterprises, Inc. is a prequalified provider of General Contractor services selected in accordance with RFQ 2019-37 requirements and approved by the City Council in February 12, 2020, through Resolution 20-36. The work should be performed in accordance with the contract provisions contained in the Continuing Professional Services Agreement between TGSV Enterprises, Inc and the City of Doral dated April 14, 2020, and the attached Proposal dated February 1, 2021, submitted by your firm for the above referenced project.

SCOPE OF SERVICES AND SCHEDULE:


The scope of the project will be as described in the attached proposal from TGSV Enterprises, Inc. dated February 1, 2021. The scope includes construction of the Security Improvements at the City of Doral Government Center located at 8401 NW 53rd Terrace Doral, FL 33166. The schedule requires the work to be performed within 30 days from the receipt of the glass material required to complete the project, as per proposal submitted by TGSV Enterprises, Inc. "Exhibit A". All limitations of time set forth in this Work Order area of the essence. The performance of services associated with this Work Order will be executed based on the proposal submitted by TGSV Enterprises, Inc. "Exhibit A", with a not to exceed amount of \$213,342.00.

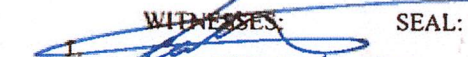

You are required by the Continuing Service Agreement to begin work subsequent to the execution of this Work Order, or as directed otherwise. If you fail to begin work subsequent to the execution of this Work Order, the City of Doral will be entitled to disqualify the Proposal and revoke the award.

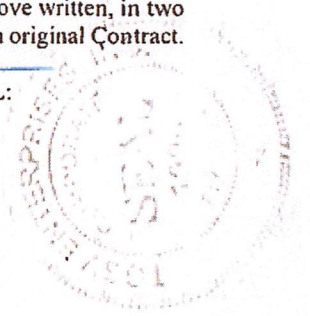
Work Order incorporates the terms and conditions set forth in the Continuing Services Agreement dated April 14, 2020, between the parties as though fully set forth herein. In the event that any terms or conditions of this Work Order conflict with the Continuing Services Agreement, the provisions of this specific Work Order shall prevail and apply.

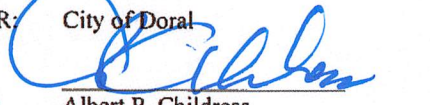
This Work Order is not binding until the City of Doral agrees and approves this Work Order.

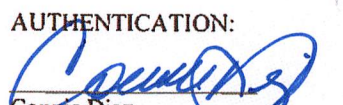
IN WITNESS WHEREOF, the parties hereto have executed this Agreement on the day and date first above written, in two (2) counterparts, each of which shall, without proof or accounting for the other counterpart be deemed an original Contract.

CONSULTANT: TGSV Enterprises, Inc
BY: 
NAME: RICHARD GOMEZ
TITLE: VICE PRESIDENT

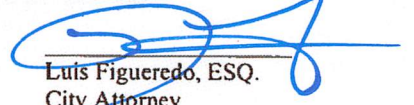
WITNESSES: SEAL:
1. 
2. 



OWNER: City of Doral
BY: 
NAME: Albert P. Childress
TITLE: City Manager

AUTHENTICATION:
BY: 
NAME: Connie Diaz
TITLE: City Clerk

APPROVED AS TO FORM AND LEGAL SUFFICIENCY FOR THE SOLE USE OF THE CITY OF DORAL:

BY: 
NAME: Luis Figueredo, ESQ.
TITLE: City Attorney

**CITY HALL DOWNTOWN DORAL SECURITY GLASS
INSTALLATION**



February 1, 2021

City of Doral
8401 NW 53 Terrace
Doral, FL 33166
Attn: Mr. Luis Sanchez

RE: City Hall Downtown Doral Security Glass Installation

Dear Mr. Sanchez,

We are pleased to submit this proposal for construction of **City Hall Downtown Doral Security Glass Installation** located at **8401 NW 53rd Terrace Doral, FL**. This proposal is based on **V 3 Architectural Group** drawings as Scheduled on **Exhibit "A"** and in the following qualifications:

INCLUSIONS:

DIVISION 1: GENERAL REQUIREMENTS

- Trash removal and dumpster cost
- All work being performed during regular working hours (Monday thru Friday – 7:00 AM to 4:00PM)
- Proposal is only valid for 45 days from date of issuance.
- Dumpster fees
- Construction power, water and toilets (sanitary services) are by Owner
- Parking fees are excluded; parking provided by Owner
- Safety as per OSHA standards
- Progress and final cleaning
- Insurance coverage as required
- Performance and payment bond is excluded
- Includes \$2,500 reimbursable cost for Permit Fee
- NOTE: Glazing System has approximately 8 to 12-week lead time, so we will commence work once material is ordered and delivery date is confirmed.

**CITY HALL DOWNTOWN DORAL SECURITY GLASS
INSTALLATION**



DIVISION 2: Demolition

- Demo only of drywall at glazing returns to install backing for system. No flooring or casework demolition is included.

DIVISIONS 3: CONCRETE

- No work included for this scope

DIVISION 4: MASONRY

- No work included for this scope

DIVISION 5: METALS

- No work included for this scope

DIVISION 6: CARPENTRY

- No work included for this scope

DIVISION 7: THERMAL AND MOISTURE PROTECTION

- No work included for this scope

DIVISION 8: WINDOWS AND DOORS

- 315 Square feet of Avanti Tempered bent glass Elite Freestanding glass partition system is included for countertop areas.
- Nabco Automatic door is included with side lights by alternate manufacturer

DIVISION 9: FINISHES

- Drywall patching at jambs where blocking is installed and for any wiring required for access control is included. No new framing or partitions are included.
- Painting only of areas where drywall patching is performed is included. We do not include painting of entire walls. Paint may not match and will appear as a patch.

DIVISION 10: SPECIALTIES

- No work included for this scope

**CITY HALL DOWNTOWN DORAL SECURITY GLASS
INSTALLATION**



DIVISION 11: EQUIPMENT

- No work included for this scope

DIVISION 12: FURNISHINGS

- No work included for this scope

DIVISION 13: SPECIAL CONSTRUCTION

- No work included for this scope

DIVISION 14: CONVEYING SYSTEMS

- No work included for this scope

DIVISION 15: MECHANICAL

Fire Protection

- No work included for this scope

Plumbing

- No work included for this scope

HVAC

- No work included for this scope

DIVISION 16: ELECTRICAL

- Power to automatic doors is included.
- Access control button is included at Ground Floor desk to control future sliding glass door only. Work and pricing provided by ADT, City of Doral's access control vendor.
- **No fire alarm controls are included; however, this may be required due to life safety requirements. Nothing was indicated on drawings, so we did not include.**

BASE PRICE:

\$213,342 (Two Hundred Thirteen Thousand Three Hundred Forty Two and 00/100)

**CITY HALL DOWNTOWN DORAL SECURITY GLASS
INSTALLATION**



EXCLUSIONS:

DIVISION 1: GENERAL REQUIREMENTS

- All Permit fees
- Impact fees
- Engineering fees
- Permanent utilities connection fees
- Cost of plan revision or any cost due to plan revisions
- Builder's risk insurance and deductible cost. To be provided by Owner
- Testing
- Parking fees
- Performance and payment bond cost
- Overnight site security.

DIVISION 2: DEMOLITION

- Asbestos Abatement or asbestos reports.
- Removal and disposal of contaminated materials

Do not hesitate to contact us if you have any questions.

Sincerely,

A handwritten signature in black ink, appearing to read 'Richard Gomez', with a long horizontal flourish extending to the right.

Richard Gomez
Vice President

**CITY HALL DOWNTOWN DORAL SECURITY GLASS
INSTALLATION**



ENTERPRISES, INC.

General Contractor / Construction Manager

EXHIBIT "A" – Drawings

AD.2

GENERAL NOTES

CITY HALL, DOWNTOWN DORAL
SECURITY GLASS INSTALLATION
8401 NW 53RD TERRACE
DORAL, FLORIDA 33166

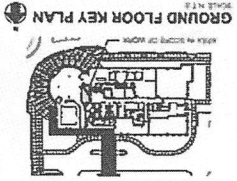
| | | |
|---------------------------|--|--|
| | | |
| PAINTING | HARDWARE NOTES: | GUIDELINES FOR ACCESSIBILITY TO PHYSICALLY DISABLED PERSONS |
| SEALANTS AND CAULK | DOOR GENERAL NOTES: | DOOR GENERAL NOTES: |
| RECORD DRAWINGS | SECURITY NOTES (BURGLARY SECURITY & FORCED ENTRY) | SECURITY NOTES (BURGLARY SECURITY & FORCED ENTRY) |
| GYPNUM WALL BOARD | DOORS: | DOORS: |
| DOOR NOTES | GRESS NOTE: | GRESS NOTE: |

A1.1
GROUND FLOOR PLAN

DESIGNED BY: [Name]
 DRAWN BY: [Name]
 CHECKED BY: [Name]
 PROJECT NO.: [Number]

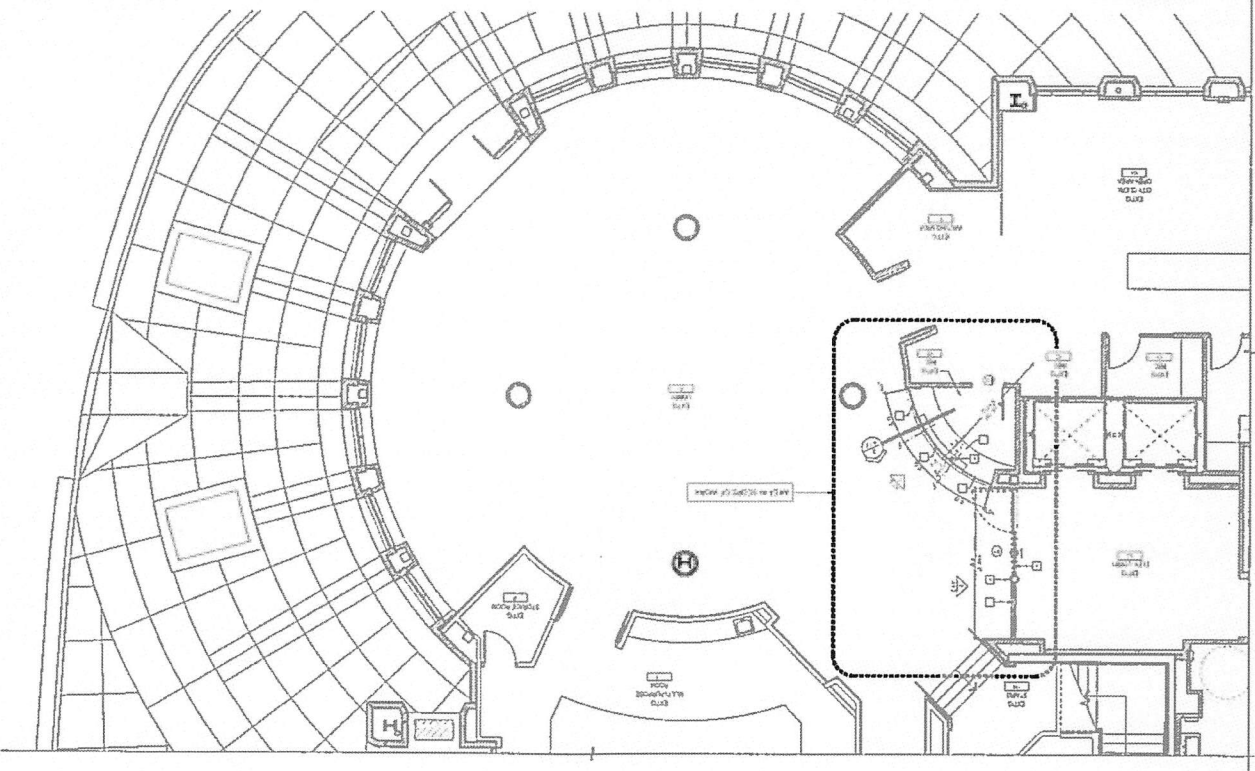
**CITY HALL DOWNTOWN DORAL
 SECURITY GLASS INSTALLATION
 8401 NW 53RD TERRACE
 DORAL, FLORIDA 33166**

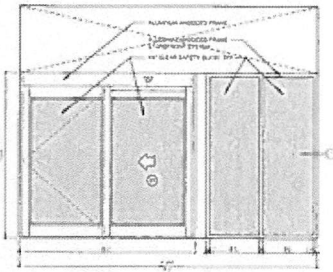
ARCHITECTURAL FIRM: [Name]



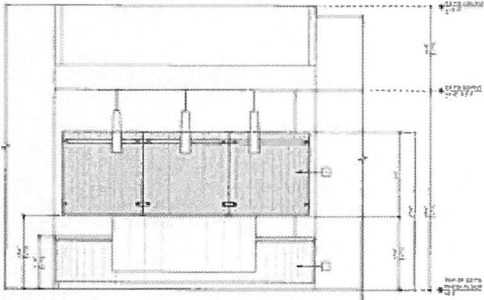
- PROPOSED FLOOR PLAN KEY NOTES:**
- 1. ALL DIMENSIONS ARE TO FACE UNLESS NOTED OTHERWISE.
 - 2. ALL WALLS TO BE CONSTRUCTED IN ACCORDANCE WITH THE 2012 INTERNATIONAL BUILDING CODE (IBC).
 - 3. ALL GLASS TO BE INSTALLED IN ACCORDANCE WITH THE 2012 INTERNATIONAL BUILDING CODE (IBC).
 - 4. ALL GLASS TO BE INSTALLED IN ACCORDANCE WITH THE 2012 INTERNATIONAL BUILDING CODE (IBC).
 - 5. ALL GLASS TO BE INSTALLED IN ACCORDANCE WITH THE 2012 INTERNATIONAL BUILDING CODE (IBC).
 - 6. ALL GLASS TO BE INSTALLED IN ACCORDANCE WITH THE 2012 INTERNATIONAL BUILDING CODE (IBC).
 - 7. ALL GLASS TO BE INSTALLED IN ACCORDANCE WITH THE 2012 INTERNATIONAL BUILDING CODE (IBC).
 - 8. ALL GLASS TO BE INSTALLED IN ACCORDANCE WITH THE 2012 INTERNATIONAL BUILDING CODE (IBC).
 - 9. ALL GLASS TO BE INSTALLED IN ACCORDANCE WITH THE 2012 INTERNATIONAL BUILDING CODE (IBC).
 - 10. ALL GLASS TO BE INSTALLED IN ACCORDANCE WITH THE 2012 INTERNATIONAL BUILDING CODE (IBC).

- NOTES:**
1. ALL DIMENSIONS ARE TO FACE UNLESS NOTED OTHERWISE.
 2. ALL WALLS TO BE CONSTRUCTED IN ACCORDANCE WITH THE 2012 INTERNATIONAL BUILDING CODE (IBC).
 3. ALL GLASS TO BE INSTALLED IN ACCORDANCE WITH THE 2012 INTERNATIONAL BUILDING CODE (IBC).
 4. ALL GLASS TO BE INSTALLED IN ACCORDANCE WITH THE 2012 INTERNATIONAL BUILDING CODE (IBC).
 5. ALL GLASS TO BE INSTALLED IN ACCORDANCE WITH THE 2012 INTERNATIONAL BUILDING CODE (IBC).
 6. ALL GLASS TO BE INSTALLED IN ACCORDANCE WITH THE 2012 INTERNATIONAL BUILDING CODE (IBC).
 7. ALL GLASS TO BE INSTALLED IN ACCORDANCE WITH THE 2012 INTERNATIONAL BUILDING CODE (IBC).
 8. ALL GLASS TO BE INSTALLED IN ACCORDANCE WITH THE 2012 INTERNATIONAL BUILDING CODE (IBC).
 9. ALL GLASS TO BE INSTALLED IN ACCORDANCE WITH THE 2012 INTERNATIONAL BUILDING CODE (IBC).
 10. ALL GLASS TO BE INSTALLED IN ACCORDANCE WITH THE 2012 INTERNATIONAL BUILDING CODE (IBC).
- WALL LEGEND:**
1. 1/2" CMU WALL





3 GROUND FLOOR
ELEVATOR'S LOBBY ENTRY STOREFRONT
SCALE 1/2" = 1'-0"



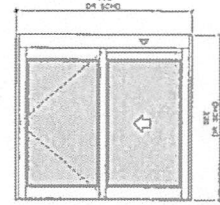
1 GROUND FLOOR
RECEPTION COUNTER ELEVATION
SCALE 1/2" = 1'-0"

PROPOSED FLOOR PLAN KEY NOTES:

- 1. 1/2" ALUMINUM ANODIZED FRAME, 1 1/2" TEMPERED GLASS
- 2. 1/2" ALUMINUM ANODIZED FRAME, 1 1/2" TEMPERED GLASS
- 3. 1/2" ALUMINUM ANODIZED FRAME, 1 1/2" TEMPERED GLASS
- 4. 1/2" ALUMINUM ANODIZED FRAME, 1 1/2" TEMPERED GLASS
- 5. 1/2" ALUMINUM ANODIZED FRAME, 1 1/2" TEMPERED GLASS
- 6. 1/2" ALUMINUM ANODIZED FRAME, 1 1/2" TEMPERED GLASS
- 7. 1/2" ALUMINUM ANODIZED FRAME, 1 1/2" TEMPERED GLASS
- 8. 1/2" ALUMINUM ANODIZED FRAME, 1 1/2" TEMPERED GLASS
- 9. 1/2" ALUMINUM ANODIZED FRAME, 1 1/2" TEMPERED GLASS
- 10. 1/2" ALUMINUM ANODIZED FRAME, 1 1/2" TEMPERED GLASS
- 11. 1/2" ALUMINUM ANODIZED FRAME, 1 1/2" TEMPERED GLASS
- 12. 1/2" ALUMINUM ANODIZED FRAME, 1 1/2" TEMPERED GLASS
- 13. 1/2" ALUMINUM ANODIZED FRAME, 1 1/2" TEMPERED GLASS
- 14. 1/2" ALUMINUM ANODIZED FRAME, 1 1/2" TEMPERED GLASS
- 15. 1/2" ALUMINUM ANODIZED FRAME, 1 1/2" TEMPERED GLASS
- 16. 1/2" ALUMINUM ANODIZED FRAME, 1 1/2" TEMPERED GLASS
- 17. 1/2" ALUMINUM ANODIZED FRAME, 1 1/2" TEMPERED GLASS
- 18. 1/2" ALUMINUM ANODIZED FRAME, 1 1/2" TEMPERED GLASS
- 19. 1/2" ALUMINUM ANODIZED FRAME, 1 1/2" TEMPERED GLASS
- 20. 1/2" ALUMINUM ANODIZED FRAME, 1 1/2" TEMPERED GLASS
- 21. 1/2" ALUMINUM ANODIZED FRAME, 1 1/2" TEMPERED GLASS
- 22. 1/2" ALUMINUM ANODIZED FRAME, 1 1/2" TEMPERED GLASS
- 23. 1/2" ALUMINUM ANODIZED FRAME, 1 1/2" TEMPERED GLASS
- 24. 1/2" ALUMINUM ANODIZED FRAME, 1 1/2" TEMPERED GLASS
- 25. 1/2" ALUMINUM ANODIZED FRAME, 1 1/2" TEMPERED GLASS
- 26. 1/2" ALUMINUM ANODIZED FRAME, 1 1/2" TEMPERED GLASS
- 27. 1/2" ALUMINUM ANODIZED FRAME, 1 1/2" TEMPERED GLASS
- 28. 1/2" ALUMINUM ANODIZED FRAME, 1 1/2" TEMPERED GLASS
- 29. 1/2" ALUMINUM ANODIZED FRAME, 1 1/2" TEMPERED GLASS
- 30. 1/2" ALUMINUM ANODIZED FRAME, 1 1/2" TEMPERED GLASS
- 31. 1/2" ALUMINUM ANODIZED FRAME, 1 1/2" TEMPERED GLASS
- 32. 1/2" ALUMINUM ANODIZED FRAME, 1 1/2" TEMPERED GLASS
- 33. 1/2" ALUMINUM ANODIZED FRAME, 1 1/2" TEMPERED GLASS
- 34. 1/2" ALUMINUM ANODIZED FRAME, 1 1/2" TEMPERED GLASS
- 35. 1/2" ALUMINUM ANODIZED FRAME, 1 1/2" TEMPERED GLASS
- 36. 1/2" ALUMINUM ANODIZED FRAME, 1 1/2" TEMPERED GLASS
- 37. 1/2" ALUMINUM ANODIZED FRAME, 1 1/2" TEMPERED GLASS
- 38. 1/2" ALUMINUM ANODIZED FRAME, 1 1/2" TEMPERED GLASS
- 39. 1/2" ALUMINUM ANODIZED FRAME, 1 1/2" TEMPERED GLASS
- 40. 1/2" ALUMINUM ANODIZED FRAME, 1 1/2" TEMPERED GLASS
- 41. 1/2" ALUMINUM ANODIZED FRAME, 1 1/2" TEMPERED GLASS
- 42. 1/2" ALUMINUM ANODIZED FRAME, 1 1/2" TEMPERED GLASS
- 43. 1/2" ALUMINUM ANODIZED FRAME, 1 1/2" TEMPERED GLASS
- 44. 1/2" ALUMINUM ANODIZED FRAME, 1 1/2" TEMPERED GLASS
- 45. 1/2" ALUMINUM ANODIZED FRAME, 1 1/2" TEMPERED GLASS
- 46. 1/2" ALUMINUM ANODIZED FRAME, 1 1/2" TEMPERED GLASS
- 47. 1/2" ALUMINUM ANODIZED FRAME, 1 1/2" TEMPERED GLASS
- 48. 1/2" ALUMINUM ANODIZED FRAME, 1 1/2" TEMPERED GLASS
- 49. 1/2" ALUMINUM ANODIZED FRAME, 1 1/2" TEMPERED GLASS
- 50. 1/2" ALUMINUM ANODIZED FRAME, 1 1/2" TEMPERED GLASS
- 51. 1/2" ALUMINUM ANODIZED FRAME, 1 1/2" TEMPERED GLASS
- 52. 1/2" ALUMINUM ANODIZED FRAME, 1 1/2" TEMPERED GLASS
- 53. 1/2" ALUMINUM ANODIZED FRAME, 1 1/2" TEMPERED GLASS
- 54. 1/2" ALUMINUM ANODIZED FRAME, 1 1/2" TEMPERED GLASS
- 55. 1/2" ALUMINUM ANODIZED FRAME, 1 1/2" TEMPERED GLASS
- 56. 1/2" ALUMINUM ANODIZED FRAME, 1 1/2" TEMPERED GLASS
- 57. 1/2" ALUMINUM ANODIZED FRAME, 1 1/2" TEMPERED GLASS
- 58. 1/2" ALUMINUM ANODIZED FRAME, 1 1/2" TEMPERED GLASS
- 59. 1/2" ALUMINUM ANODIZED FRAME, 1 1/2" TEMPERED GLASS
- 60. 1/2" ALUMINUM ANODIZED FRAME, 1 1/2" TEMPERED GLASS
- 61. 1/2" ALUMINUM ANODIZED FRAME, 1 1/2" TEMPERED GLASS
- 62. 1/2" ALUMINUM ANODIZED FRAME, 1 1/2" TEMPERED GLASS
- 63. 1/2" ALUMINUM ANODIZED FRAME, 1 1/2" TEMPERED GLASS
- 64. 1/2" ALUMINUM ANODIZED FRAME, 1 1/2" TEMPERED GLASS
- 65. 1/2" ALUMINUM ANODIZED FRAME, 1 1/2" TEMPERED GLASS
- 66. 1/2" ALUMINUM ANODIZED FRAME, 1 1/2" TEMPERED GLASS
- 67. 1/2" ALUMINUM ANODIZED FRAME, 1 1/2" TEMPERED GLASS
- 68. 1/2" ALUMINUM ANODIZED FRAME, 1 1/2" TEMPERED GLASS
- 69. 1/2" ALUMINUM ANODIZED FRAME, 1 1/2" TEMPERED GLASS
- 70. 1/2" ALUMINUM ANODIZED FRAME, 1 1/2" TEMPERED GLASS
- 71. 1/2" ALUMINUM ANODIZED FRAME, 1 1/2" TEMPERED GLASS
- 72. 1/2" ALUMINUM ANODIZED FRAME, 1 1/2" TEMPERED GLASS
- 73. 1/2" ALUMINUM ANODIZED FRAME, 1 1/2" TEMPERED GLASS
- 74. 1/2" ALUMINUM ANODIZED FRAME, 1 1/2" TEMPERED GLASS
- 75. 1/2" ALUMINUM ANODIZED FRAME, 1 1/2" TEMPERED GLASS
- 76. 1/2" ALUMINUM ANODIZED FRAME, 1 1/2" TEMPERED GLASS
- 77. 1/2" ALUMINUM ANODIZED FRAME, 1 1/2" TEMPERED GLASS
- 78. 1/2" ALUMINUM ANODIZED FRAME, 1 1/2" TEMPERED GLASS
- 79. 1/2" ALUMINUM ANODIZED FRAME, 1 1/2" TEMPERED GLASS
- 80. 1/2" ALUMINUM ANODIZED FRAME, 1 1/2" TEMPERED GLASS
- 81. 1/2" ALUMINUM ANODIZED FRAME, 1 1/2" TEMPERED GLASS
- 82. 1/2" ALUMINUM ANODIZED FRAME, 1 1/2" TEMPERED GLASS
- 83. 1/2" ALUMINUM ANODIZED FRAME, 1 1/2" TEMPERED GLASS
- 84. 1/2" ALUMINUM ANODIZED FRAME, 1 1/2" TEMPERED GLASS
- 85. 1/2" ALUMINUM ANODIZED FRAME, 1 1/2" TEMPERED GLASS
- 86. 1/2" ALUMINUM ANODIZED FRAME, 1 1/2" TEMPERED GLASS
- 87. 1/2" ALUMINUM ANODIZED FRAME, 1 1/2" TEMPERED GLASS
- 88. 1/2" ALUMINUM ANODIZED FRAME, 1 1/2" TEMPERED GLASS
- 89. 1/2" ALUMINUM ANODIZED FRAME, 1 1/2" TEMPERED GLASS
- 90. 1/2" ALUMINUM ANODIZED FRAME, 1 1/2" TEMPERED GLASS
- 91. 1/2" ALUMINUM ANODIZED FRAME, 1 1/2" TEMPERED GLASS
- 92. 1/2" ALUMINUM ANODIZED FRAME, 1 1/2" TEMPERED GLASS
- 93. 1/2" ALUMINUM ANODIZED FRAME, 1 1/2" TEMPERED GLASS
- 94. 1/2" ALUMINUM ANODIZED FRAME, 1 1/2" TEMPERED GLASS
- 95. 1/2" ALUMINUM ANODIZED FRAME, 1 1/2" TEMPERED GLASS
- 96. 1/2" ALUMINUM ANODIZED FRAME, 1 1/2" TEMPERED GLASS
- 97. 1/2" ALUMINUM ANODIZED FRAME, 1 1/2" TEMPERED GLASS
- 98. 1/2" ALUMINUM ANODIZED FRAME, 1 1/2" TEMPERED GLASS
- 99. 1/2" ALUMINUM ANODIZED FRAME, 1 1/2" TEMPERED GLASS
- 100. 1/2" ALUMINUM ANODIZED FRAME, 1 1/2" TEMPERED GLASS

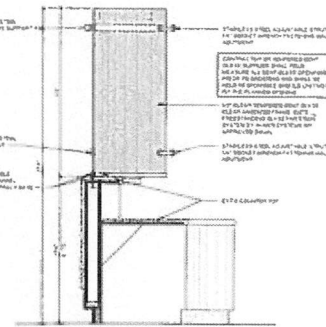
| DOOR SCHEDULE | | | | | | | | | | | |
|---------------|----------------------|-------|-------------------|----------|-------------------|----------|-------------------|----------|-------------------|----------|-------------------|
| DOOR NO. | LOCATION | TYPE | FINISH | GLASS | FRAME | GLASS | FRAME | GLASS | FRAME | GLASS | FRAME |
| 1 | ELEVATOR LOBBY ENTRY | GLASS | ALUMINUM ANODIZED | TEMPERED | ALUMINUM ANODIZED | TEMPERED | ALUMINUM ANODIZED | TEMPERED | ALUMINUM ANODIZED | TEMPERED | ALUMINUM ANODIZED |

- 1. EXTERIOR GLASS STAIR EXIT DOOR SHALL MATCH BUILDING STANDARDS GENERAL CONTRACTOR SHALL PROVIDE SHOP DRAWINGS AND SAMPLES FOR ARCHITECT'S APPROVAL
- 2. ALL INTERIOR GLASS STAIR EXIT DOORS AND WINDOWS SHALL BE UNDER OPERABLE DESIGN
- 3. CONTRACTOR OR STAIR EXIT DOOR SUPPLIER SHALL FIELD MEASURE ALL OPERABLE STAIR EXIT DOORS AND WINDOWS AND SHALL BE HELD RESPONSIBLE AND LIABLE FOR THE PLANNED OPERATIONS
- 4. STAIR EXIT DOOR FINISH CONTROL SHALL SUBMIT SHOP DRAWINGS FOR ARCHITECT'S APPROVAL
- 5. REFER TO FLOOR PLANS, ELEVATIONS, SECTIONS & DOOR SCHEDULE FOR LOCATION, CONTROL & FINISH
- 6. ALL STAIR EXIT DOORS SHALL BE 44" HIGH & 36" WIDE & SHALL BE SHOWN SHOP DRAWINGS FOR ARCHITECT'S REVIEW
- 7. ALL SHOPPING LIST PER MANUFACTURER SPECIFICATIONS ARE FOR REFERENCE ONLY PROVIDE REFERENCES AS PER MANUFACTURER'S SPECIFICATIONS

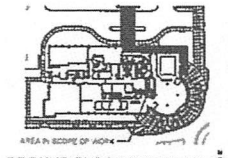


4 DOOR ELEVATION
SCALE 1/2" = 1'-0"

NOTE:
ALL GLASS SHOULD BE 1/2" TEMPERED GLASS



2 GROUND FLOOR
RECEPTION COUNTER SECTION
SCALE 1/2" = 1'-0"



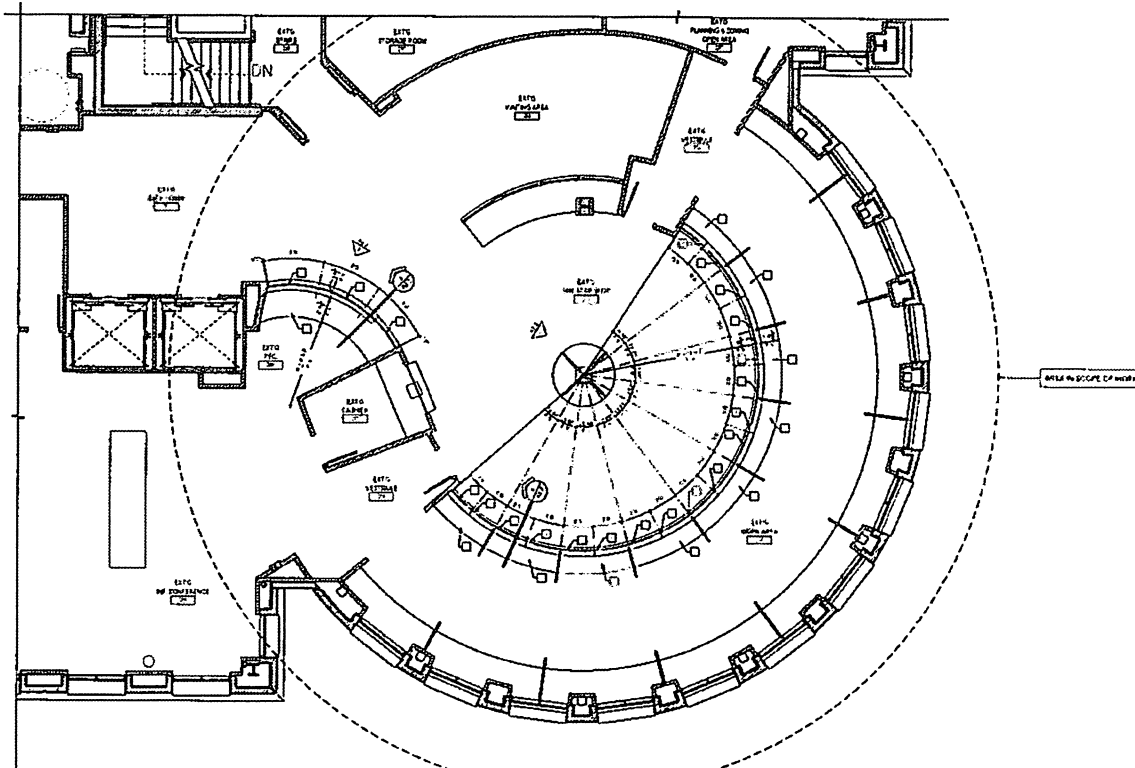
GROUND FLOOR KEY PLAN
SCALE 1/4" = 1'-0"

CITY HALL DOWNTOWN DORAL
SECURITY GLASS INSTALLATION
8401 NW 53RD TERRACE
DORAL, FLORIDA 33166

ARCHITECTURE & DESIGN
 11111 N. W. 11th Ave., Suite 100
 Doral, FL 33126
 TEL: 305.350.1111
 FAX: 305.350.1112
 WWW: www.adc.com

| | |
|-------------|----------|
| DESIGNED BY | AD |
| DRAWN BY | AD |
| REVIEWED BY | AD |
| PROJECT NO. | 11111 |
| DATE | 11/11/11 |

ELEV. & SECTIONS
A1.2

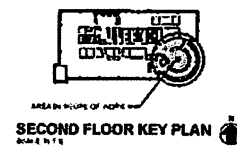


1 PARTIAL SECOND FLOOR PLAN
SCALE: 1/4" = 1'-0"

| WALL LEGEND: | |
|--------------|---------------|
| | EXISTING WALL |
| | PROPOSED WALL |

| NOTES: | |
|--------|--|
| 1. | SEE GENERAL NOTES FOR DETAILS OF WALLS AND PARTITIONS. WALLS SHALL BE CONSTRUCTED TO MATCH EXISTING WALLS UNLESS OTHERWISE NOTED. |
| 2. | WALLS SHALL BE CONSTRUCTED TO MATCH EXISTING WALLS UNLESS OTHERWISE NOTED. |
| 3. | NO SURVEYING MARKS UNLESS OTHERWISE NOTED IN THESE DRAWINGS. |
| 4. | SEE DIMENSIONS AND NOTES FOR DETAILS OF WALLS AND PARTITIONS. WALLS SHALL BE CONSTRUCTED TO MATCH EXISTING WALLS UNLESS OTHERWISE NOTED. |
| 5. | THE S.C.E. IS RESPONSIBLE FOR ALL CONSTRUCTION AND ALL PARTITIONS AND WALLS UNLESS OTHERWISE NOTED. |

| PROPOSED FLOOR PLAN KEY NOTES: | |
|--------------------------------|--|
| | SEE CLEAR TEMPERED GLASS CLEAR ANCHORED FRAME, SUPPLY FRAMING AND GLASS TO MATCH EXISTING GLASS. |
| | GLASS PARTITION GLASS. |
| | WALL OPENING IN EXISTING WALL. |



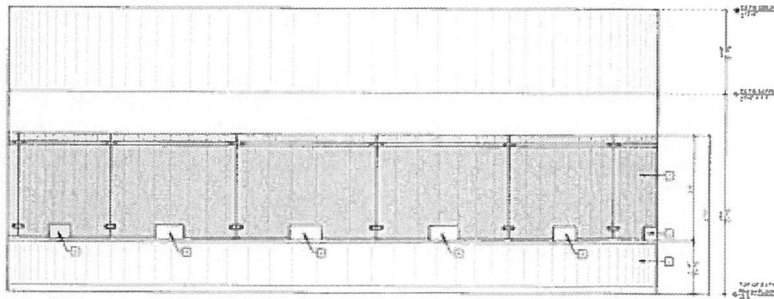
ARCHITECTURAL RECORD

**CITY HALL DOWNTOWN DORAL
SECURITY GLASS INSTALLATION
8401 NW 53RD TERRACE
DORAL, FLORIDA 33166**

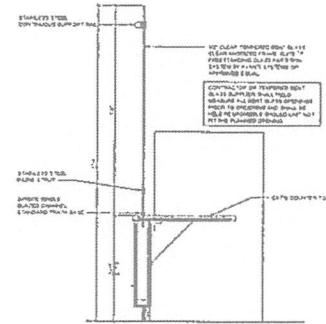
| | |
|-------------|----------|
| DATE | 10/10/16 |
| DESIGNED BY | ... |
| DRAWN BY | ... |
| CHECKED BY | ... |
| PROJECT NO. | ... |
| DATE | ... |

SECOND FLOOR PLAN

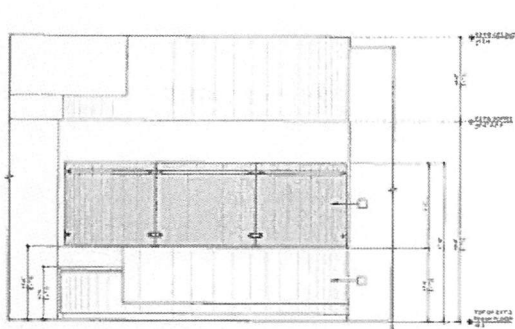
A2.1



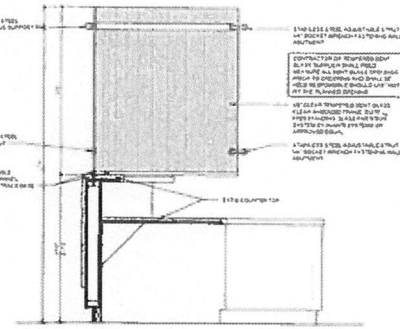
3 PARTIAL SECOND FLOOR ONE STOP SHOP ELEVATION
SCALE: 1/2" = 1'-0"



4 SECOND FLOOR ONE STOP SHOP COUNTER SECTION
SCALE: 1" = 1'-0"



1 SECOND FLOOR SOLUTION CENTER COUNTER ELEVATION
SCALE: 1/2" = 1'-0"



2 SECOND FLOOR SOLUTION CENTER COUNTER SECTION
SCALE: 1" = 1'-0"

PROPOSED FLOOR PLAN KEY NOTES:

- NOT CLEAR (REQUIRED SIGN) OR CLEAR (REQUIRED) (SEE NOTE 1) (SEE FLOOR PLAN)
- EXTRA HEIGHT SIGN (REQUIRED)
- 1/2\"/>

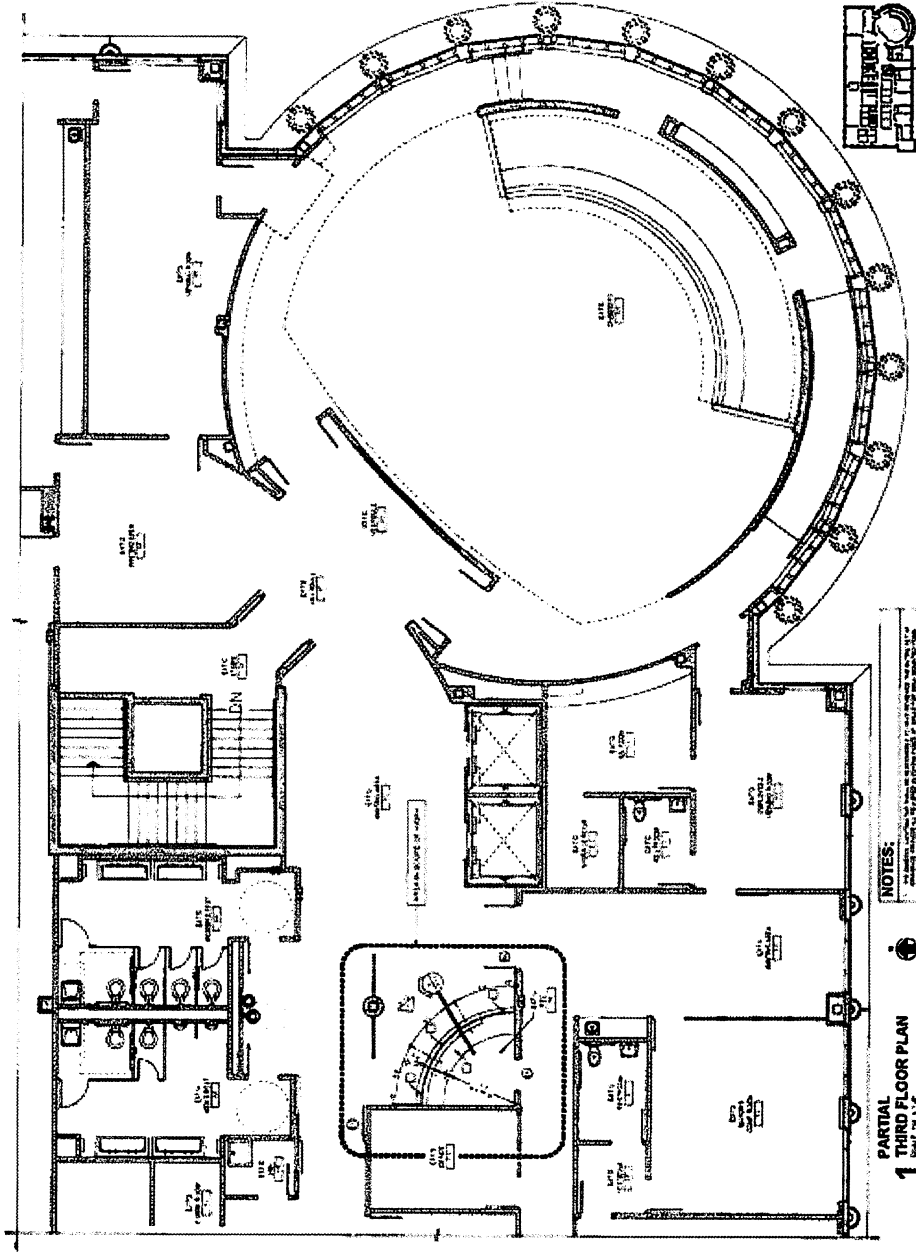


AREA IN SCOPE OF ADR-4
SECOND FLOOR KEY PLAN
SCALE: 1/4" = 1'-0"

ARCHITECTURAL GROUP

CITY HALL DOWNTOWN DORAL SECURITY GLASS INSTALLATION
8401 NW 53RD TERRACE
DORAL, FLORIDA 33166

| | |
|-----------------------------|-------------|
| DESIGNED BY | PROJECT NO. |
| DRAWN BY | DATE |
| CHECKED BY | PROJECT NO. |
| REVISIONS | |
| ELEV. & SECTIONS | |
| A2.2 | |



**PARTIAL
1 THIRD FLOOR PLAN**

WALL LEGEND:
 1/2" GLASS PARTITION
 1/2" GLASS CURTAIN WALL

NOTES:

1. ALL GLASS PARTITIONS TO BE 1/2" THICK GLASS WITH 1/2" GLASS GASKET AND 1/2" GLASS GASKET.
2. ALL GLASS CURTAIN WALLS TO BE 1/2" THICK GLASS WITH 1/2" GLASS GASKET AND 1/2" GLASS GASKET.
3. ALL GLASS PARTITIONS TO BE 1/2" THICK GLASS WITH 1/2" GLASS GASKET AND 1/2" GLASS GASKET.
4. ALL GLASS CURTAIN WALLS TO BE 1/2" THICK GLASS WITH 1/2" GLASS GASKET AND 1/2" GLASS GASKET.

PROPOSED FLOOR PLAN KEY NOTES:
 1. ALL GLASS PARTITIONS TO BE 1/2" THICK GLASS WITH 1/2" GLASS GASKET AND 1/2" GLASS GASKET.
 2. ALL GLASS CURTAIN WALLS TO BE 1/2" THICK GLASS WITH 1/2" GLASS GASKET AND 1/2" GLASS GASKET.

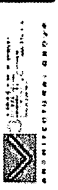


THIRD FLOOR KEY PLAN
 AREA IN SHADE OF THIRD FLOOR
 SCALE 1/4" = 1'-0"

**CITY HALL DOWNTOWN DORAL
 SECURITY GLASS INSTALLATION
 8401 NW 53RD TERRACE
 DORAL, FLORIDA 33166**

**THIRD FLOOR
 FLR PLAN
 A3.1**

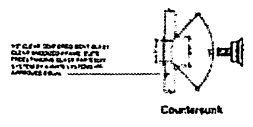
DATE: 10/15/11
 DRAWN BY: [Name]
 CHECKED BY: [Name]
 PROJECT NO.: [Number]



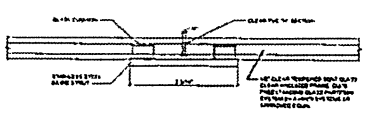
ARCHITECTURAL FIRM

CITY HALL DOWNTOWN DORAL
 SECURITY GLASS INSTALLATION
 8401 NW 53RD TERRACE
 DORAL, FLORIDA 33166

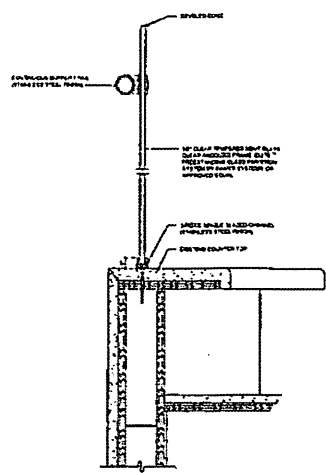
| | |
|--------------|-------|
| DATE | 07/20 |
| DESIGNED BY | ... |
| DRAWN BY | ... |
| REVISIONS BY | ... |
| PROJECT NO. | ... |
| PROJECT | ... |
| TO: PROJECT | ... |
| DETAILS | A3.3 |



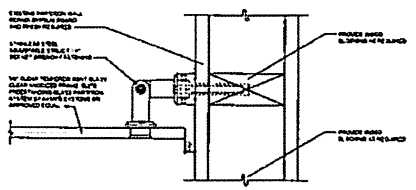
2 STRAIGHT JOINT CONNECTION
 SCALE 1/4" = 1'-0"



3 STRAIGHT JOINT CONNECTION
 SCALE 1/4" = 1'-0"



1 THIRD FLOOR RECEPTION COUNTER SECTION
 SCALE 1/4" = 1'-0"

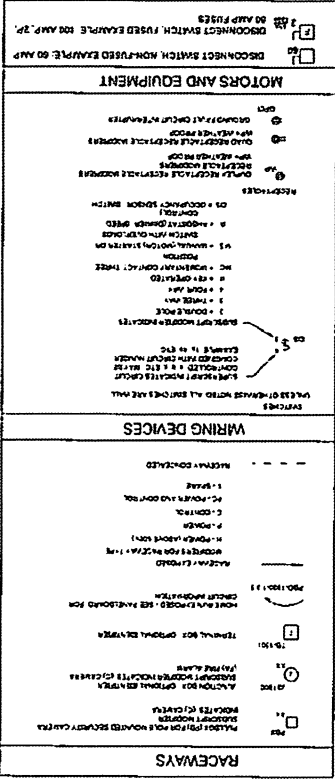


4 GLASS TO WALL CONNECTION PLAN VIEW
 SCALE 1/4" = 1'-0"

ASAP ENGINEERS
 1100 S.W. 15th Street, Suite 100, Doral, Florida 33126
 Phone: (305) 851-1100
 Fax: (305) 851-1101
 Website: www.asap-engineers.com

CITY HALL REMODELING DORAL
 INTERIOR REMODELING
 8401 NW 38th TERACE
 DORAL, FLORIDA 33166

E1.00
 LEGEND SYMBOLS
 NOTES



SCOPE OF WORK

The scope of work for this project is defined as follows:

1. All work shall be in accordance with the Florida Electrical Code and the National Electrical Code.
2. The contractor shall provide all materials, labor, and supervision necessary to complete the work.
3. The contractor shall be responsible for obtaining all necessary permits and licenses.
4. The contractor shall maintain the safety of the work area at all times.
5. The contractor shall provide a clean and safe work area at all times.
6. The contractor shall provide a detailed schedule of work to the owner.
7. The contractor shall provide a detailed estimate of costs to the owner.
8. The contractor shall provide a detailed list of subcontractors to the owner.
9. The contractor shall provide a detailed list of vendors to the owner.
10. The contractor shall provide a detailed list of suppliers to the owner.

GENERAL NOTES

1. All work shall be in accordance with the Florida Electrical Code and the National Electrical Code.
2. The contractor shall provide all materials, labor, and supervision necessary to complete the work.
3. The contractor shall be responsible for obtaining all necessary permits and licenses.
4. The contractor shall maintain the safety of the work area at all times.
5. The contractor shall provide a clean and safe work area at all times.
6. The contractor shall provide a detailed schedule of work to the owner.
7. The contractor shall provide a detailed estimate of costs to the owner.
8. The contractor shall provide a detailed list of subcontractors to the owner.
9. The contractor shall provide a detailed list of vendors to the owner.
10. The contractor shall provide a detailed list of suppliers to the owner.

LEGEND SYMBOLS

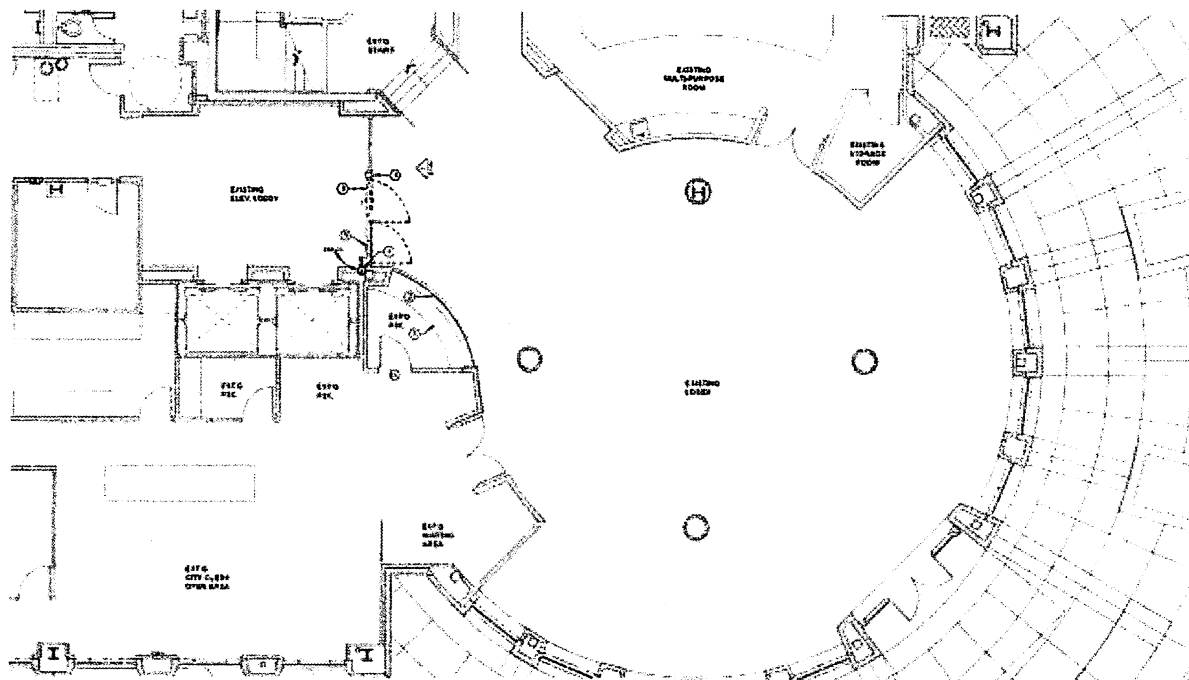
1. DISCONNECT SWITCH, FUSED EXAMPLE, 80 AMP, 2P, 1P

2. DISCONNECT SWITCH, MOUNTED EXAMPLE, 80 AMP

3. MOTORS AND EQUIPMENT

4. WARNING DEVICES

5. RACEWAYS



ELECTRICAL GROUND FLOOR PLAN ⊕
SCALE 1/4" = 1'-0"

PROPOSED FLOOR PLAN KEY NOTES

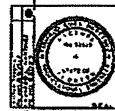
- ① ALL FIELD CONDITIONS TO BE PROVIDED BY OWNER WITH ALL TYPICAL CONDITIONS
- ② ALL WORK TO BE DONE BY CONTRACTOR TO BE PROVIDED BY OWNER WITH ALL TYPICAL CONDITIONS
- ③ ALL WORK TO BE DONE BY CONTRACTOR TO BE PROVIDED BY OWNER WITH ALL TYPICAL CONDITIONS
- ④ ALL WORK TO BE DONE BY CONTRACTOR TO BE PROVIDED BY OWNER WITH ALL TYPICAL CONDITIONS
- ⑤ ALL WORK TO BE DONE BY CONTRACTOR TO BE PROVIDED BY OWNER WITH ALL TYPICAL CONDITIONS
- ⑥ ALL WORK TO BE DONE BY CONTRACTOR TO BE PROVIDED BY OWNER WITH ALL TYPICAL CONDITIONS
- ⑦ ALL WORK TO BE DONE BY CONTRACTOR TO BE PROVIDED BY OWNER WITH ALL TYPICAL CONDITIONS
- ⑧ ALL WORK TO BE DONE BY CONTRACTOR TO BE PROVIDED BY OWNER WITH ALL TYPICAL CONDITIONS
- ⑨ ALL WORK TO BE DONE BY CONTRACTOR TO BE PROVIDED BY OWNER WITH ALL TYPICAL CONDITIONS
- ⑩ ALL WORK TO BE DONE BY CONTRACTOR TO BE PROVIDED BY OWNER WITH ALL TYPICAL CONDITIONS

KEY MAP ⊕



CITY HALL DOWNTOWN DORAL
INTERIOR REMODELING
8401 NW 53RD TERRACE
DORAL, FLORIDA 33166

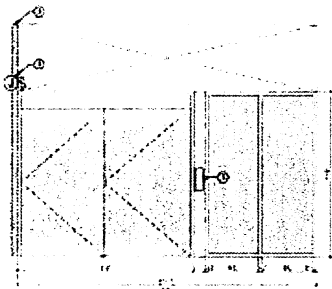
| | |
|-------------|------|
| DESIGNED BY | DATE |
| DRAWN BY | DATE |
| CHECKED BY | DATE |
| PROJECT NO. | DATE |
| REVISIONS | |



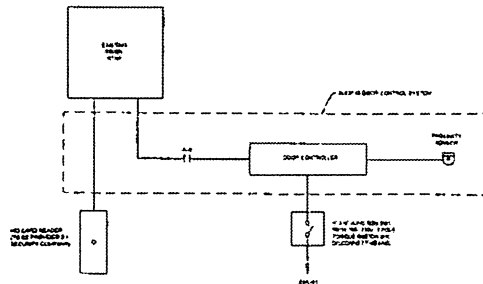
ELECTRICAL GROUND FLOOR PLAN

E1.01

DATE: 08/14/12



**ELECTRICAL GROUND FLOOR
ELEVATOR & LOBBY ENTRY STOREFRONT PLAN**
SCALE: 1/8" = 1'-0"



ELECTRICAL SCHEMATICS

PROPOSED FLOOR PLAN KEY NOTES

- 1. ELEVATOR MOTOR TO BE PROVIDED BY ELEVATOR MANUFACTURER.
- 2. PROVIDE 1/2" DIA. AND 1/2" DIA. HOLES FOR ELEVATOR MOTOR AND DOOR OPERATOR THROUGH WALLS AT POINTS OF ELECTRICAL CONNECTION FOR THE DOOR MOTOR.
- 3. SEE THE DOOR MOTOR MANUFACTURER'S SPECIFICATIONS.

NOTES:
 ALL WORK AND MATERIALS TO BE INSTALLED IN ACCORDANCE WITH THE NATIONAL ELECTRICAL CODE (NEC) AND ALL APPLICABLE LOCAL, STATE AND FEDERAL CODES AND REGULATIONS. THE CONTRACTOR SHALL BE RESPONSIBLE FOR OBTAINING ALL NECESSARY PERMITS AND APPROVALS FROM THE APPROPRIATE AGENCIES.

DETAILS & ELECTRICAL SCHEMATICS
SCALE: AS NOTED



**CITY HALL, DOWNTOWN DORAL
 INTERIOR REMODELING
 8401 NW 53RD TERRACE
 DORAL, FLORIDA 33166**

| | |
|--|------------|
| DATE: 11/19/16 | REVISIONS: |
| BY: [Signature] | NO. 1 |
| CHECKED BY: [Signature] | NO. 2 |
| DATE: 11/19/16 | NO. 3 |
| PROJECT NO. 16-001 | NO. 4 |
| PROJECT NAME: CITY HALL, DOWNTOWN DORAL | NO. 5 |
| PROJECT ADDRESS: 8401 NW 53RD TERRACE, DORAL, FL 33166 | NO. 6 |
| PROJECT DESCRIPTION: INTERIOR REMODELING | NO. 7 |
| PROJECT PHASE: [] | NO. 8 |
| PROJECT STATUS: [] | NO. 9 |
| PROJECT CONTACT: [] | NO. 10 |
| PROJECT PHONE: [] | NO. 11 |
| PROJECT FAX: [] | NO. 12 |
| PROJECT EMAIL: [] | NO. 13 |
| PROJECT WEBSITE: [] | NO. 14 |
| PROJECT SOCIAL MEDIA: [] | NO. 15 |

DETAILS AND ELECTRICAL SCHEMATICS

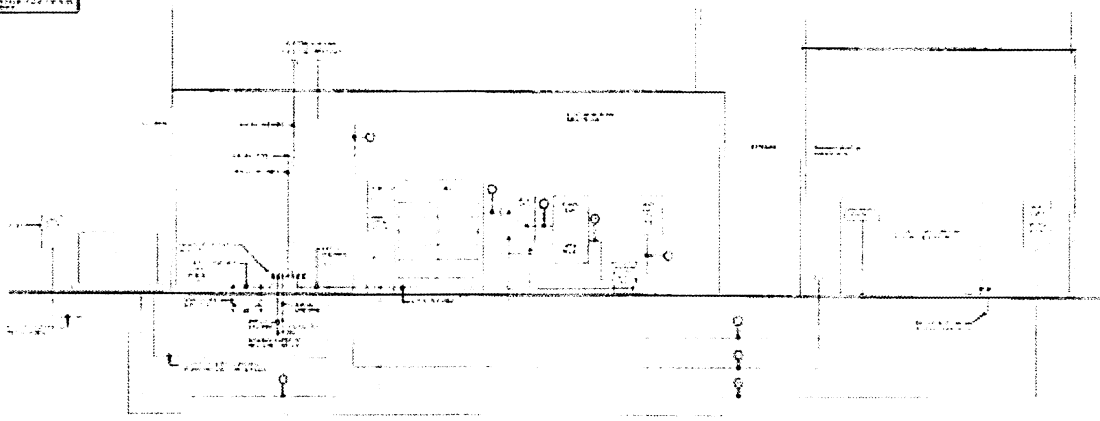
E1.02

DATE: 11/19/16



ELECTRICAL FIXTURE SCHEDULE

| | |
|----|---|
| 1 | FLUORESCENT LIGHT FIXTURE |
| 2 | INCANDESCENT LIGHT FIXTURE |
| 3 | RECESSED CAN LIGHT FIXTURE |
| 4 | TRAY LIGHT FIXTURE |
| 5 | TRACK LIGHT FIXTURE |
| 6 | EXIT LIGHT FIXTURE |
| 7 | EMERGENCY LIGHT FIXTURE |
| 8 | STAIR LIGHT FIXTURE |
| 9 | RECESSED DOWN LIGHT FIXTURE |
| 10 | RECESSED UP LIGHT FIXTURE |
| 11 | RECESSED DOWN UP LIGHT FIXTURE |
| 12 | RECESSED DOWN DOWN LIGHT FIXTURE |
| 13 | RECESSED DOWN DOWN UP LIGHT FIXTURE |
| 14 | RECESSED DOWN DOWN DOWN LIGHT FIXTURE |
| 15 | RECESSED DOWN DOWN DOWN UP LIGHT FIXTURE |
| 16 | RECESSED DOWN DOWN DOWN DOWN LIGHT FIXTURE |
| 17 | RECESSED DOWN DOWN DOWN DOWN UP LIGHT FIXTURE |
| 18 | RECESSED DOWN DOWN DOWN DOWN DOWN LIGHT FIXTURE |
| 19 | RECESSED DOWN DOWN DOWN DOWN DOWN UP LIGHT FIXTURE |
| 20 | RECESSED DOWN DOWN DOWN DOWN DOWN DOWN LIGHT FIXTURE |
| 21 | RECESSED DOWN DOWN DOWN DOWN DOWN DOWN UP LIGHT FIXTURE |
| 22 | RECESSED DOWN DOWN DOWN DOWN DOWN DOWN DOWN LIGHT FIXTURE |
| 23 | RECESSED DOWN DOWN DOWN DOWN DOWN DOWN DOWN UP LIGHT FIXTURE |
| 24 | RECESSED DOWN DOWN DOWN DOWN DOWN DOWN DOWN DOWN LIGHT FIXTURE |
| 25 | RECESSED DOWN DOWN DOWN DOWN DOWN DOWN DOWN DOWN UP LIGHT FIXTURE |
| 26 | RECESSED DOWN DOWN DOWN DOWN DOWN DOWN DOWN DOWN DOWN LIGHT FIXTURE |
| 27 | RECESSED DOWN DOWN DOWN DOWN DOWN DOWN DOWN DOWN DOWN UP LIGHT FIXTURE |
| 28 | RECESSED DOWN DOWN DOWN DOWN DOWN DOWN DOWN DOWN DOWN DOWN LIGHT FIXTURE |
| 29 | RECESSED DOWN DOWN DOWN DOWN DOWN DOWN DOWN DOWN DOWN DOWN UP LIGHT FIXTURE |
| 30 | RECESSED DOWN DOWN DOWN DOWN DOWN DOWN DOWN DOWN DOWN DOWN DOWN LIGHT FIXTURE |
| 31 | RECESSED DOWN DOWN DOWN DOWN DOWN DOWN DOWN DOWN DOWN DOWN DOWN UP LIGHT FIXTURE |
| 32 | RECESSED DOWN DOWN DOWN DOWN DOWN DOWN DOWN DOWN DOWN DOWN DOWN DOWN LIGHT FIXTURE |
| 33 | RECESSED DOWN DOWN DOWN DOWN DOWN DOWN DOWN DOWN DOWN DOWN DOWN DOWN UP LIGHT FIXTURE |
| 34 | RECESSED DOWN DOWN DOWN DOWN DOWN DOWN DOWN DOWN DOWN DOWN DOWN DOWN DOWN LIGHT FIXTURE |
| 35 | RECESSED DOWN DOWN DOWN DOWN DOWN DOWN DOWN DOWN DOWN DOWN DOWN DOWN DOWN UP LIGHT FIXTURE |
| 36 | RECESSED DOWN DOWN DOWN DOWN DOWN DOWN DOWN DOWN DOWN DOWN DOWN DOWN DOWN DOWN LIGHT FIXTURE |
| 37 | RECESSED DOWN DOWN DOWN DOWN DOWN DOWN DOWN DOWN DOWN DOWN DOWN DOWN DOWN DOWN UP LIGHT FIXTURE |
| 38 | RECESSED DOWN DOWN DOWN DOWN DOWN DOWN DOWN DOWN DOWN DOWN DOWN DOWN DOWN DOWN DOWN LIGHT FIXTURE |
| 39 | RECESSED DOWN DOWN DOWN DOWN DOWN DOWN DOWN DOWN DOWN DOWN DOWN DOWN DOWN DOWN DOWN UP LIGHT FIXTURE |
| 40 | RECESSED DOWN DOWN DOWN DOWN DOWN DOWN DOWN DOWN DOWN DOWN DOWN DOWN DOWN DOWN DOWN DOWN LIGHT FIXTURE |
| 41 | RECESSED DOWN DOWN DOWN DOWN DOWN DOWN DOWN DOWN DOWN DOWN DOWN DOWN DOWN DOWN DOWN DOWN UP LIGHT FIXTURE |
| 42 | RECESSED DOWN DOWN DOWN DOWN DOWN DOWN DOWN DOWN DOWN DOWN DOWN DOWN DOWN DOWN DOWN DOWN DOWN LIGHT FIXTURE |
| 43 | RECESSED DOWN DOWN DOWN DOWN DOWN DOWN DOWN DOWN DOWN DOWN DOWN DOWN DOWN DOWN DOWN DOWN DOWN UP LIGHT FIXTURE |
| 44 | RECESSED DOWN DOWN DOWN DOWN DOWN DOWN DOWN DOWN DOWN DOWN DOWN DOWN DOWN DOWN DOWN DOWN DOWN DOWN LIGHT FIXTURE |
| 45 | RECESSED DOWN DOWN DOWN DOWN DOWN DOWN DOWN DOWN DOWN DOWN DOWN DOWN DOWN DOWN DOWN DOWN DOWN DOWN UP LIGHT FIXTURE |
| 46 | RECESSED DOWN DOWN DOWN DOWN DOWN DOWN DOWN DOWN DOWN DOWN DOWN DOWN DOWN DOWN DOWN DOWN DOWN DOWN DOWN LIGHT FIXTURE |
| 47 | RECESSED DOWN DOWN DOWN DOWN DOWN DOWN DOWN DOWN DOWN DOWN DOWN DOWN DOWN DOWN DOWN DOWN DOWN DOWN DOWN UP LIGHT FIXTURE |
| 48 | RECESSED DOWN LIGHT FIXTURE |
| 49 | RECESSED DOWN UP LIGHT FIXTURE |
| 50 | RECESSED DOWN LIGHT FIXTURE |



PARTIAL ELECTRICAL RISER DIAGRAM

CITY HALL, DOWNTOWN DORAL
INTERIOR REMODELING
8401 NW 53RD TERRACE
DORAL, FLORIDA 33166

| | |
|-------------|-------------|
| DESIGNED BY | DATE |
| DRAWN BY | SCALE |
| CHECKED BY | PROJECT NO. |
| APPROVED BY | REVISED |
| DATE | |

PARTIAL ELECTRICAL RISER DIAGRAM

E3.00

RESOLUTION No. 21-49

A RESOLUTION OF THE MAYOR AND THE CITY COUNCIL OF THE CITY OF DORAL, FLORIDA, APPROVING A OF WORK ORDER TO TGSV ENTERPRISES, INC. (TGSV) FOR THE PROVISION OF CONSTRUCTION SERVICES AT THE DORAL GOVERNMENT CENTER TO IMPROVE SECURITY AND SAFETY IN THE FACILITY IN AN AMOUNT NOT TO EXCEED \$213,342.00 AND THE USE OF THE ADDITIONAL \$36,658.00 IN CONTINGENCY FUNDS TO BE USED FOR ANY UNFORESEEN EVENTS; AUTHORIZING A BUDGET TRANSFER OF \$250,000.00 FROM THE GENERAL GOVERNMENT FUND "CONTINGENT RESERVE" ACCOUNT, No. 001.50005.500492, TO THE PUBLIC WORKS FUND - "CONSTRUCTION IN PROGRESS" ACCOUNT No. 001.80005.500650 FOR THE COMPLETION OF THE SAFETY IMPROVEMENTS; AUTHORIZING THE CITY MANAGER TO EXPEND BUDGETED FUNDS IN FURTHERANCE HEREOF; PROVIDING FOR IMPLEMENTATION; AND PROVIDING FOR AN EFFECTIVE DATE

WHEREAS, as the City continues to grow, there is a need for the City's facilities to adapt and transform in order to address the needs of a growing staff and ensure that the best possible service is provided to the community; and

WHEREAS, the topics of upgrading systems and improving operating practices have been a top priority; and

WHEREAS, the COVID-19 pandemic spread quickly across the United States forcing cities to impose stay-at home and shelter-in-place orders; building operations had to adjust to allow personnel to work from home; and

WHEREAS, the Public Works Department (PWD) Facility Maintenance Division developed a guidance for the safe return to the City's main facilities, which includes building personnel, visitors, vendors, contractors, and others, and identifies other operational and safety procedures and protocols that should be implemented, updated, or enhanced as the City prepares to live and work in a post-COVID-19 world; and

WHEREAS, on April 2, 2020, the City Manager's Office directed the PWD to proceed with the temporary installation of higher Plexiglas partitions, until a permanent solution was designed to help prevent the spread of COVID-19; and

WHEREAS, on May 13, 2020, the Mayor and City Council-Members adopted Resolution No. 20-84 (approved 5-0) authorizing the City Manager to issue a Work Order (WO) to APCTE for the design and development of construction documents for Doral Government Center Renovations; and

WHEREAS, the designed security / safety measures include the construction of a storefront controlled access door on the 1st floor lobby controlled by the 1st floor reception desk and a card reader, protective curved glass partitions for all 3 levels reception desks, and protective curved glass partitions for the 2nd floor Solution Center; and

WHEREAS, the PWD requested TGSV to provide a proposal based on the set of Construction Documents prepared by APCTE; and

WHEREAS, GSV provided a proposal in a not to exceed amount of \$213,342.00 for the installation of the curved glass partitions in all three levels and a storefront in the first floor of Government; and

WHEREAS, on January 15, 2021, the City Manager's Office instructed the PWD to include the construction phase of the project in the February 2021 Council Meeting as a result of current national events and the continuous spread of the COVID-19 virus; and

WHEREAS, the PWD respectfully request that the Mayor and the City Council-Members authorize the City Manager to issue Work Order No. 2 to TGSV Enterprises,

Inc. for the provision of security and safety preventive measures construction services at the Doral Government Center in an amount not to exceed \$250,000.00, which includes \$36,658.00 for contingency to address any unforeseen conditions; and

WHEREAS, the PWD respectfully request that the Mayor and the City Council-Members to retroactive authorize the budget transfer of \$250,000.00 from the General Government Fund “Contingent Reserve” Account, Account No. 001.50005.500492, to the Public Works Fund - “Construction in Progress” Account, Account No. 001.80005.500650 for the completion of the safety and security improvements.

NOW, THEREFORE, BE IT RESOLVED BY THE CITY COUNCIL OF THE CITY OF DORAL AS FOLLOWS:

Section 1. Recitals. The above recitals are confirmed, adopted, and incorporated herein and made part hereof by this reference.

Section 2. Approval. The Work Order between the City of Doral and TGSV Enterprises, Inc for the provision of construction of safety and security measures at the Doral Government Center in an amount of \$213,342.00, the use of the additional \$36,658.00 in contingency funds to be used for permitting and any unforeseen events, and the budget transfer of \$250,000.00 from the General Government Fund “Contingent Reserve” Account, Account No. 001.50005.500492, to the Public Works Fund - “Construction in Progress” Account, Account No. 001.80005.500650 for the completion of the improvements, are hereby approved.

Section 3. Authorization. The Mayor and the City Council-Members authorize the issuance of the Work Order to TGSV Enterprises and authorize the City Manager to expend budgeted funds on behalf of the City in furtherance hereof.

Section 4. Implementation. The City Manager and the City Attorney are hereby authorized to take such further action as may be necessary to implement the purpose and the provisions of this Resolution.

Section 5. Effective Date. This Resolution shall take effect immediately upon adoption.

The foregoing Resolution was offered by Vice Mayor Cabrera who moved its adoption. The motion was seconded by Councilman Puig-Corve and upon being put to a vote, the vote was as follows:

| | |
|------------------------------|-----|
| Mayor Juan Carlos Bermudez | Yes |
| Vice Mayor Pete Cabrera | Yes |
| Councilwoman Digna Cabral | Yes |
| Councilwoman Claudia Mariaca | Yes |
| Councilman Oscar Puig-Corve | Yes |

PASSED AND ADOPTED this 10 day of February, 2021.



JUAN CARLOS BERMUDEZ, MAYOR

ATTEST:



CONNIE DIAZ, MMC
CITY CLERK

APPROVED AS TO FORM AND LEGAL SUFFICIENCY
FOR THE USE AND RELIANCE OF THE CITY OF DORAL ONLY:



LUIS FIGUEREDO, ESQ.
CITY ATTORNEY